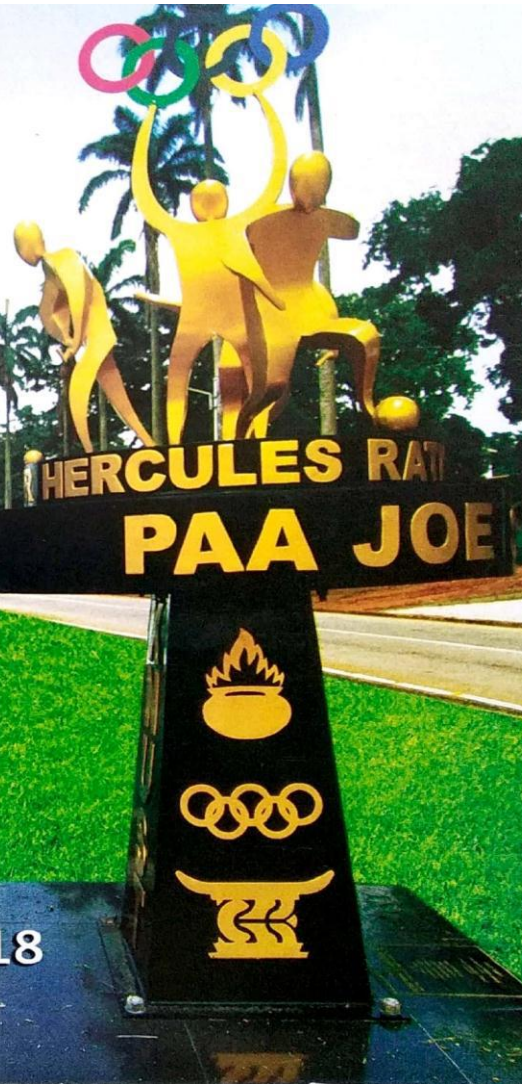


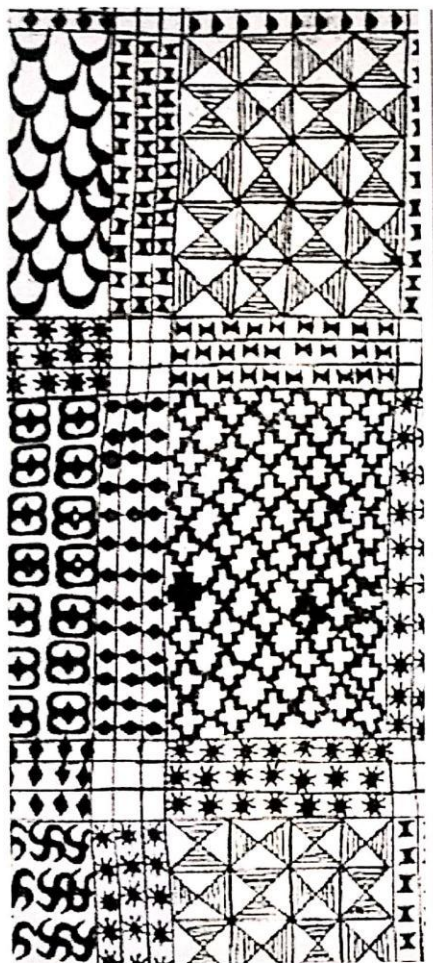
KWAME NKRUMAH UNIVERSITY OF  
SCIENCE AND TECHNOLOGY



# BASIC STATISTICS

52<sup>nd</sup> CONGREGATION - JULY, 2018





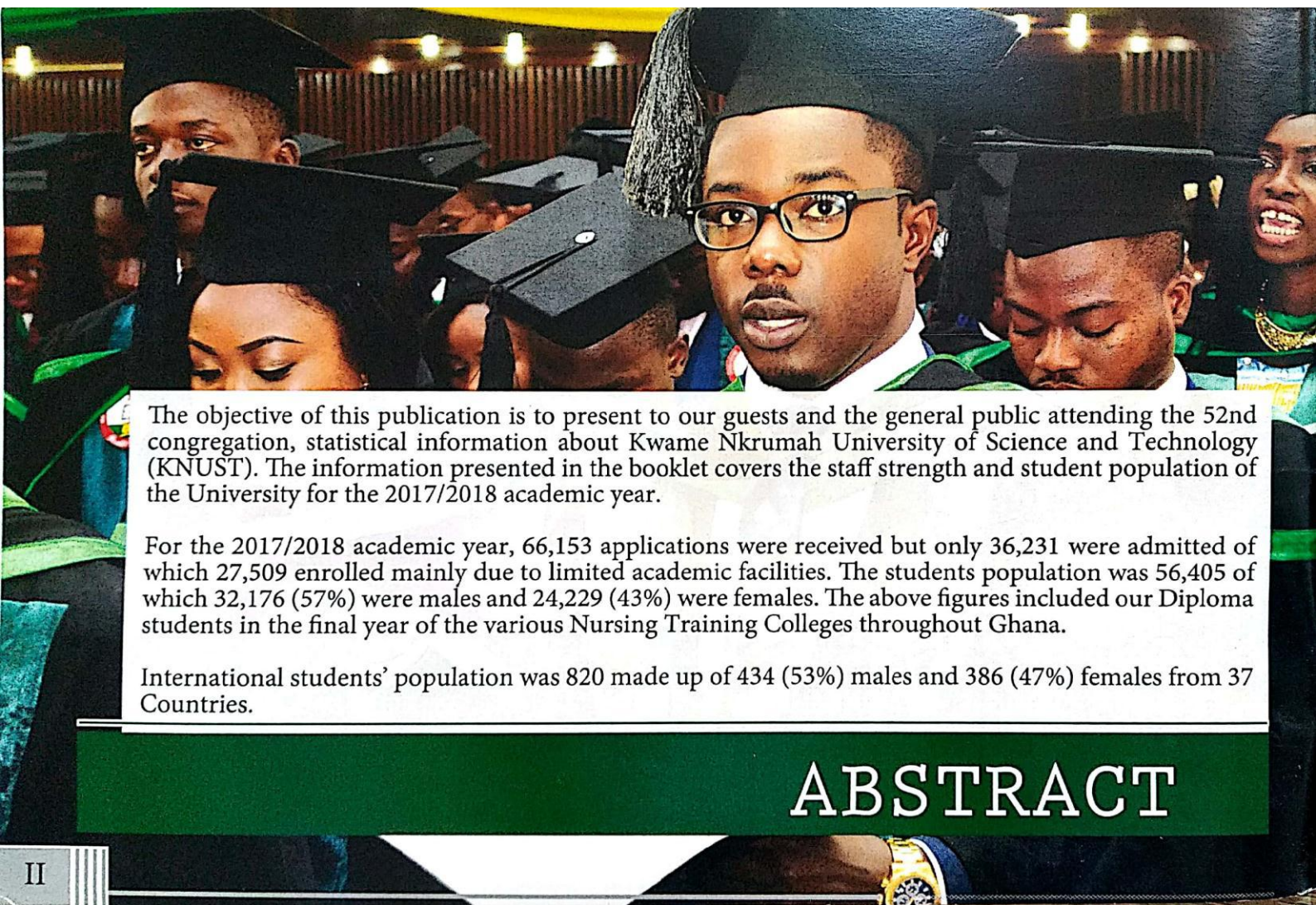
KWAME NKRUMAH UNIVERSITY  
OF SCIENCE AND TECHNOLOGY

BASIC STATISTICS  
FOR

52nd CONGREGATION  
JULY, 2018







The objective of this publication is to present to our guests and the general public attending the 52nd congregation, statistical information about Kwame Nkrumah University of Science and Technology (KNUST). The information presented in the booklet covers the staff strength and student population of the University for the 2017/2018 academic year.

For the 2017/2018 academic year, 66,153 applications were received but only 36,231 were admitted of which 27,509 enrolled mainly due to limited academic facilities. The students population was 56,405 of which 32,176 (57%) were males and 24,229 (43%) were females. The above figures included our Diploma students in the final year of the various Nursing Training Colleges throughout Ghana.

International students' population was 820 made up of 434 (53%) males and 386 (47%) females from 37 Countries.

## ABSTRACT

Applications and admission info by gender and college (2017/18)	1
Application and admission info by gender , college and faculty (2017/18)	2
Graduate application info by gender, college and faculty (2017/18)	7
Graduands distribution by faculty , gender and class (2017/18)	10
Student enrollment by college	14
Undergraduate enrollement of international students by gender, college and faculty	17
Enrollement of international students by nationality and gender	19
Undergraduate enrollement of ghanaiian students by gender, college and faculty	21
Fee paying ghanaiian students by gender, college and faculty (2017/18)	23
Academic staff (senior members)	25
Senior members( admin)	34
Senior staff	40
Junior staff	53

# CONTENTS



# STATISTICS

Figure 1 - Applicants, Qualified, Admitted, New Entrant and Current Student population by Gender (2017/18 Academic Year)	5
Figure 2 - Applicants & Admission information by Colleges (2017/18 Academic Year)	6
Figure 3 - Graduate Application & Admission information by Colleges (2017/18 Academic Year)	9
Figure 4 - Undergraduate Application & Admission information by Colleges (2017/18 Academic Year)	13
Figure 5 & 6 - Students Enrolment by College	16

## LIST OF FIGURES

## APPLICATIONS AND ADMISSION INFO BY GENDER AND COLLEGE (2017/18)

COLLEGE	APPLIED			QUALIFIED			ADMITTED			NEW ENTRANT			CURRENT STUDENT POPULATION		
	F	M	Total	F	M	Total	F	M	Total	F	M	Total	F	M	Total
CANR	420	1081	1501	281	757	1038	593	1428	2021	375	886	1261	1094	2719	3813
CABE	1531	3527	5058	1037	2305	3342	1035	2016	3051	662	1388	2050	1788	4041	5829
CoE	870	5137	6007	667	3917	4584	493	2450	2943	302	1529	1831	857	4915	5772
CoHS	19127	9385	28512	3122	3615	6737	9836	3802	13638	9243	3449	12692	12095	5488	17583*
CoHSS	6356	7301	13657	3965	4795	8760	2469	3426	5895	1353	1841	3194	4150	5460	9610
IDL	1775	4662	6437	809	2082	2891	1512	3868	5380	1330	3177	4507	2076	5047	7123
KNUST-AISWM	70	188	258											2	2
CoS	1588	3135	4723	1174	2403	3576	1182	2122	3303	730	1245	1974	2169	4504	6673
Total Result	31737	34416	66153	11055	19874	30928	17120	19112	36231	13995	13515	27509	24229	32176	56405
PER-CENTAGE	48%	52%	100%	36%	64%	100%	47%	53%	100%	51%	49%	100%	43%	57%	100%

\* Diploma candidates in the various Nursing /Midwifery Training Colleges in Ghana are included.



**APPLICATION AND ADMISSION INFO BY GENDER , COLLEGE AND FACULTY (2017/18)**

COLLEGE	Faculty	APPLIED			QUALIFIED			ADMITTED			NEW ENTRANT			CURRENT STUDENT POPULATION		
		F	M	Total	F	M	Total	F	M	Total	F	M	Total	F	M	Total
CANR	Agriculture	237	721	958	162	509	671	324	928	1252	205	565	770	591	1754	2345
	Forest Resources Technology	9	58	67	5	37	42	64	142	206	37	80	117	80	204	284
	Renewable Natural Resources	174	302	476	114	211	325	205	358	563	133	241	374	423	761	1184
	<b>TOTAL</b>	<b>420</b>	<b>1081</b>	<b>1501</b>	<b>281</b>	<b>757</b>	<b>1038</b>	<b>593</b>	<b>1428</b>	<b>2021</b>	<b>375</b>	<b>886</b>	<b>1261</b>	<b>1094</b>	<b>2719</b>	<b>3813</b>
CABE	Art	610	1229	1839	308	593	901	578	945	1523	324	566	890	826	1692	2518
	Built Environment	921	2298	3219	729	1712	2441	457	1071	1528	338	822	1160	962	2349	3311
	<b>TOTAL</b>	<b>1531</b>	<b>3527</b>	<b>5058</b>	<b>1037</b>	<b>2305</b>	<b>3342</b>	<b>1035</b>	<b>2016</b>	<b>3051</b>	<b>662</b>	<b>1388</b>	<b>2050</b>	<b>1788</b>	<b>4041</b>	<b>5829</b>
CoE	Civil And Geo-Engineering	318	1693	2011	248	1326	1574	165	830	995	107	562	669	325	1749	2074
	Electrical And Computer Engineering	242	1696	1938	174	1262	1436	155	714	869	81	398	479	192	1146	1338
	Mechanical And Chemical Engineering	310	1748	2058	245	1329	1574	173	906	1079	114	569	683	340	2020	2360
	<b>TOTAL</b>	<b>870</b>	<b>5137</b>	<b>6007</b>	<b>667</b>	<b>3917</b>	<b>4584</b>	<b>493</b>	<b>2450</b>	<b>2943</b>	<b>302</b>	<b>1529</b>	<b>1831</b>	<b>857</b>	<b>4915</b>	<b>5772</b>

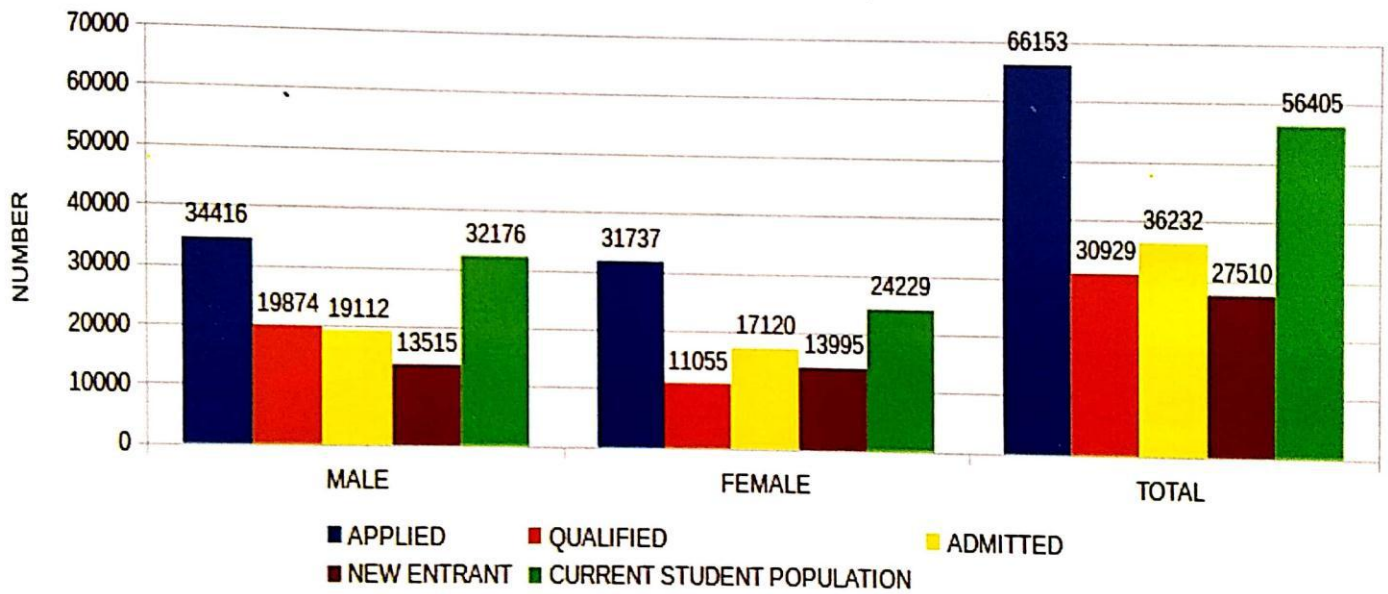
CoHS	Allied Health Sciences	16742	5981	<b>22723</b>	1288	889	<b>2177</b>	9197	3010	<b>12207</b>	8742	2819	<b>11561</b>	10269	3300	<b>13569</b>
	Dental School	53	69	<b>122</b>	45	51	<b>96</b>	27	32	<b>59</b>	25	23	<b>48</b>	116	91	<b>207</b>
	Pharmacy and Pharmaceutical Sciences	818	1354	<b>2172</b>	625	1076	<b>1701</b>	284	377	<b>661</b>	249	326	<b>575</b>	825	1066	<b>1891</b>
	School of Medical Sciences	1439	1835	<b>3274</b>	1112	1512	<b>2624</b>	274	298	<b>572</b>	190	225	<b>415</b>	832	903	<b>1735</b>
	School of Public Health	56	75	<b>131</b>	38	39	<b>77</b>	38	39	<b>77</b>	29	31	<b>60</b>	27	29	<b>56</b>
	School of Veterinary Medicine	19	71	<b>90</b>	14	48	<b>62</b>	16	46	<b>62</b>	8	25	<b>33</b>	26	99	<b>125</b>
	<b>TOTAL</b>	<b>19127</b>	<b>9385</b>	<b>28512</b>	<b>3122</b>	<b>3615</b>	<b>6737</b>	<b>9836</b>	<b>3802</b>	<b>13638</b>	<b>9243</b>	<b>3449</b>	<b>12692</b>	<b>12095</b>	<b>5488</b>	<b>17583</b>
CoHSS	KNUST School of Business	2134	3041	<b>5175</b>	1412	2107	<b>3519</b>	887	1511	<b>2398</b>	558	864	<b>1422</b>	1084	1838	<b>2922</b>
	Law	1182	792	<b>1974</b>	719	426	<b>1145</b>	136	146	<b>282</b>	106	119	<b>225</b>	362	427	<b>789</b>
	Social Sciences	3040	3468	<b>6508</b>	1834	2262	<b>4096</b>	1446	1769	<b>3215</b>	689	858	<b>1547</b>	2704	3195	<b>5899</b>
	<b>TOTAL</b>	<b>6356</b>	<b>7301</b>	<b>13657</b>	<b>3965</b>	<b>4795</b>	<b>8760</b>	<b>2469</b>	<b>3426</b>	<b>5895</b>	<b>1353</b>	<b>1841</b>	<b>3194</b>	<b>4150</b>	<b>5460</b>	<b>9610</b>
IDL	Institute of Distance Learning	1775	4662	<b>6437</b>	809	2082	<b>2891</b>	1512	3868	<b>5380</b>	1330	3177	<b>4507</b>	2076	5047	<b>7123</b>
	<b>TOTAL</b>	<b>1775</b>	<b>4662</b>	<b>6437</b>	<b>809</b>	<b>2082</b>	<b>2891</b>	<b>1512</b>	<b>3868</b>	<b>5380</b>	<b>1330</b>	<b>3177</b>	<b>4507</b>	<b>2076</b>	<b>5047</b>	<b>7123</b>



<b>KNUST-AISM</b>	KNUST-Africa Institute of Sanitation and Waste Management	70	188	<b>258</b>											2	2
	<b>TOTAL</b>	<b>70</b>	<b>188</b>	<b>258</b>											<b>2</b>	<b>2</b>
<b>CoS</b>	Biosciences	1048	1045	<b>2093</b>	752	839	<b>1591</b>	644	624	<b>1268</b>	394	392	<b>786</b>	1200	1399	<b>2599</b>
	Mathematical and Computer Science	429	1803	<b>2232</b>	341	1335	<b>1676</b>	348	1009	<b>1357</b>	213	576	<b>789</b>	636	2062	<b>2698</b>
	Physical Sciences	111	287	<b>398</b>	80	228	<b>308</b>	189	488	<b>677</b>	122	276	<b>398</b>	333	1043	<b>1376</b>
	<b>TOTAL</b>	<b>1588</b>	<b>3135</b>	<b>4723</b>	<b>1173</b>	<b>2402</b>	<b>3575</b>	<b>1181</b>	<b>2121</b>	<b>3302</b>	<b>729</b>	<b>1244</b>	<b>1973</b>	<b>2169</b>	<b>4504</b>	<b>6673</b>
<b>GRAND TOTAL</b>		<b>31737</b>	<b>34416</b>	<b>66153</b>	<b>11054</b>	<b>19873</b>	<b>30927</b>	<b>17119</b>	<b>19111</b>	<b>36230</b>	<b>13994</b>	<b>13514</b>	<b>27508</b>	<b>24229</b>	<b>32176</b>	<b>56405</b>

APPLICANTS, QUALIFIED, ADMITTED, NEW ENTRANT AND  
CURRENT STUDENT POPULATION BY GENDER  
(2017/18 ACADEMIC YEAR)

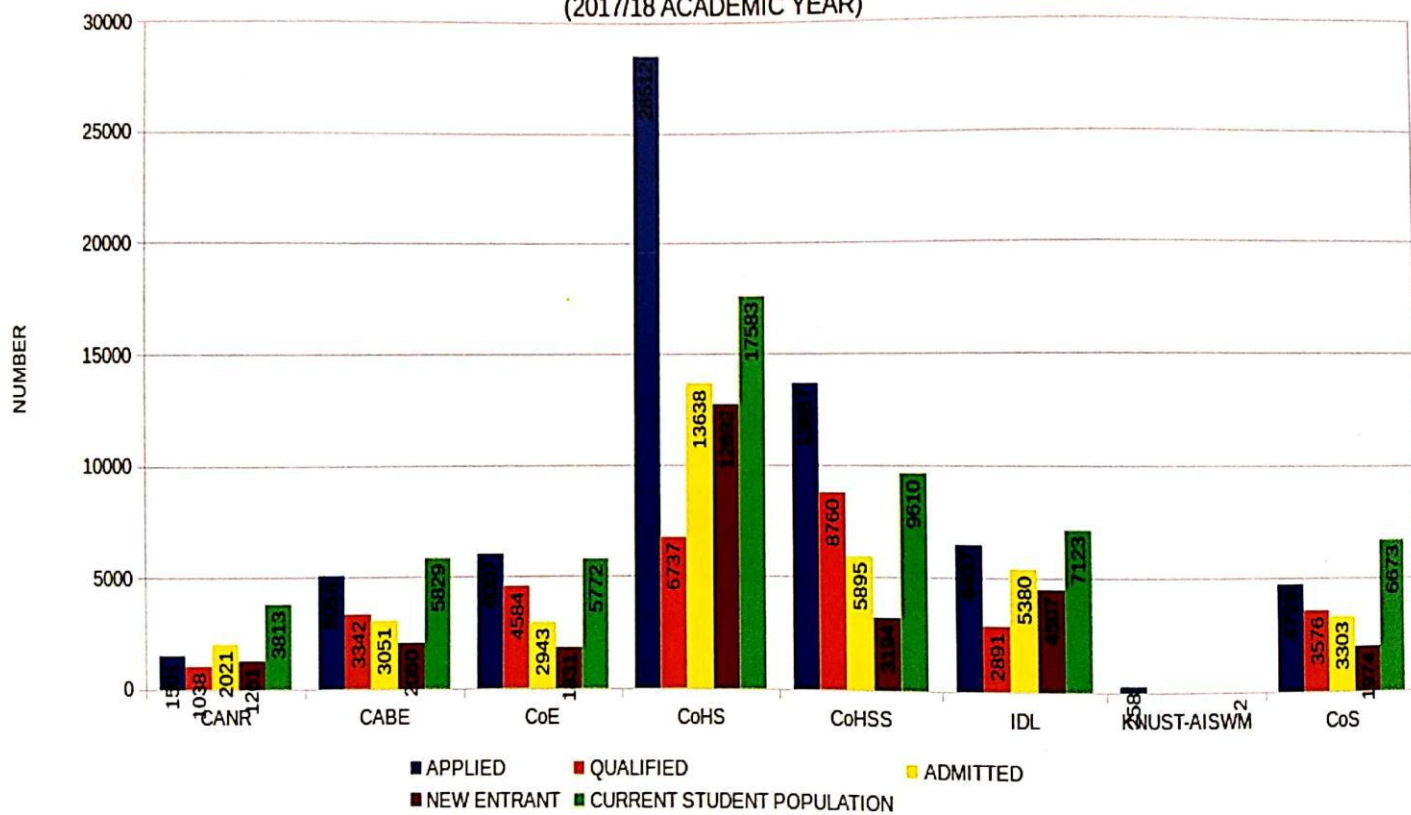
Fig. 1





APPLICATION & ADMISSION INFORMATION BY COLLEGES  
(2017/18 ACADEMIC YEAR)

Fig. 2



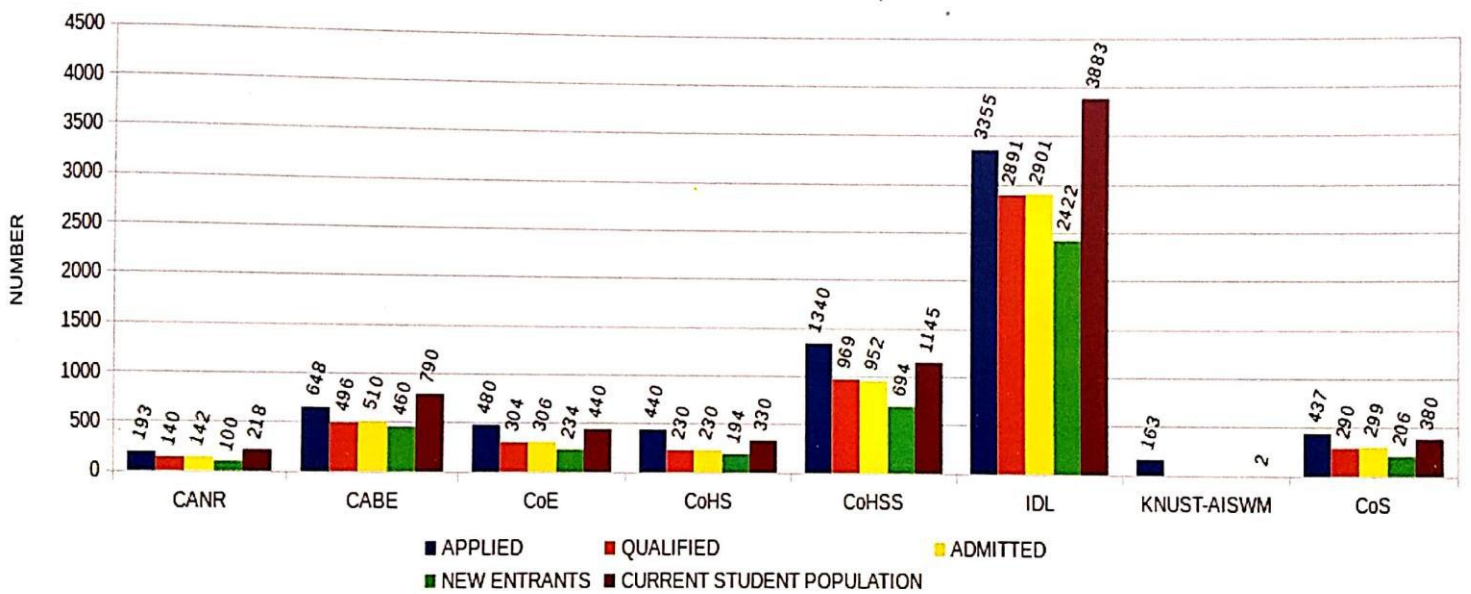
<b>GRADUATE APPLICATION INFO BY GENDER, COLLEGE AND FACULTY (2017/18)</b>																
COLLEGE	FACULTY	APPLIED			QUALIFIED			ADMITTED			NEW ENTRANT			CURRENT STUDENT POPULATION		
		F	M	Total	F	M	Total	F	M	Total	F	M	Total	F	M	Total
CANR	Agriculture	27	121	148	21	85	106	21	87	108	18	53	71	41	106	147
	Renewable Natural Resources	11	34	45	9	25	34	9	25	34	8	21	29	18	53	71
CABE	Art	36	69	105	30	52	82	30	53	83	26	42	68	48	123	171
	Built Environment	131	412	543	105	309	414	106	321	427	98	294	392	156	463	619
CoE	Civil And Geo-Engineering	47	255	302	31	163	194	31	163	194	28	134	162	62	257	319
	Electrical And Computer Engineering	3	43	46	1	25	26	1	25	26		20	20	2	31	33
	Mechanical And Chemical Engineering	23	109	132	12	72	84	13	73	86	8	44	52	14	74	88
CoHS	Allied Health Sciences	45	51	96	21	17	38	21	17	38	18	14	32	19	17	36
	Pharmacy and Pharmaceutical Sciences	23	57	80	16	34	50	16	34	50	12	32	44	35	76	111
	School of Medical Sciences	35	98	133	21	44	65	21	44	65	20	38	58	46	81	127
	School of Public Health	56	75	131	38	39	77	38	39	77	29	31	60	27	29	56

<b>CoHSS</b>	KNUST School of Business	298	603	<b>901</b>	220	444	<b>664</b>	217	430	<b>647</b>	172	292	<b>464</b>	286	525	<b>811</b>
	Law	10	23	<b>33</b>	7	20	<b>27</b>	6	20	<b>26</b>	4	12	<b>16</b>	6	14	<b>20</b>
	Social Sciences	97	309	<b>406</b>	58	220	<b>278</b>	58	221	<b>279</b>	48	166	<b>214</b>	76	238	<b>314</b>
<b>IDL</b>	Institute of Distance Learning	908	2447	<b>3355</b>	809	2082	<b>2891</b>	812	2089	<b>2901</b>	703	1719	<b>2422</b>	1197	2686	<b>3883</b>
<b>KNUST-AISWM</b>	KNUST-Africa Institute of Sanitation and Waste Management	51	112	<b>163</b>											2	<b>2</b>
<b>CoS</b>	Biosciences	64	89	<b>153</b>	41	55	<b>96</b>	42	53	<b>95</b>	32	39	<b>71</b>	63	78	<b>141</b>
	Mathematical and Computer Science	32	186	<b>218</b>	24	134	<b>158</b>	24	134	<b>158</b>	15	88	<b>103</b>	21	159	<b>180</b>
	Physical Sciences	10	56	<b>66</b>	7	29	<b>36</b>	10	36	<b>46</b>	8	24	<b>32</b>	15	44	<b>59</b>
<b>Total Result</b>		<b>1907</b>	<b>5149</b>	<b>7056</b>	<b>1471</b>	<b>3849</b>	<b>5320</b>	<b>1476</b>	<b>3864</b>	<b>5340</b>	<b>1247</b>	<b>3063</b>	<b>4310</b>	<b>2132</b>	<b>5056</b>	<b>7188</b>



GRADUATE APPLICATION & ADMISSION INFORMATION BY COLLEGES  
(2017/18 ACADEMIC YEAR)

Fig. 3



### GRADUANDS DISTRIBUTION BY FACULTY , GENDER AND CLASS (2017/18)

College	Faculty	Dis-tinction		Second Class		Pass		Total Result							
		M	F	M	T	F	M	T	F	M	T	F	M	T	
CANR	Agriculture		5	21	26	41	148	189	23	92	115	12	31	43	373
	Forest Resources Technology			3	3		14	14		10	10	1	1	2	29
	Renewable Natural Resources		2	5	7	20	44	64	19	37	56	4	11	15	142
CABE	Art		24	49	73	72	199	271	14	41	55	6	13	19	418
	Built Environment		8	28	36	58	194	252	23	127	150	14	43	57	495
CoE	Civil And Geo-Engineering		7	31	38	10	122	132	5	60	65	7	28	35	270
	Electrical And Computer Engineering		4	34	38	7	92	99	3	42	45	1	2	3	185
	Mechanical And Chemical Engineering		6	26	32	16	176	192	10	139	149	1	34	35	408
CoHS	Allied Health Sciences		17	16	33	124	56	180	23	10	33	1	1	2	248
	Dental School											12	10	22	22
	Pharmacy and Pharmaceutical Sciences		1		1	1	10	11	2	9	11	83	76	159	182
	School of Medical Sciences		8	6	14	15	11	26	3	10	13	114	114	228	281

	School of Public Health											31	22	53	53
	School of Veterinary Medicine											6	12	18	18
CoHSS	KNUST School of Business		28	75	103	44	<b>104</b>	148	10	35	45	7	18	25	321
	Law			1	1	28	47	75	33	47	80	1	1	2	158
	Social Sciences		45	75	120	252	<b>315</b>	567	147	226	373	31	65	96	1156
IDL	Institute of Distance Learning	2	1	17	18	70	<b>125</b>	195	98	290	388	107	232	339	942
KNUST-AISWM	KNUST-Africa Institute of Sanitation and Waste Management											3	3	6	6
CoS	Biosciences		8	20	28	54	<b>94</b>	148	12	24	36	26	46	72	284
	Physical and Computational Sciences		18	70	88	50	<b>232</b>	282	15	111	126	8	36	44	540
Total Result		2	182	477	659	862	1983	2845	440	1310	1750	476	799	1275	6531

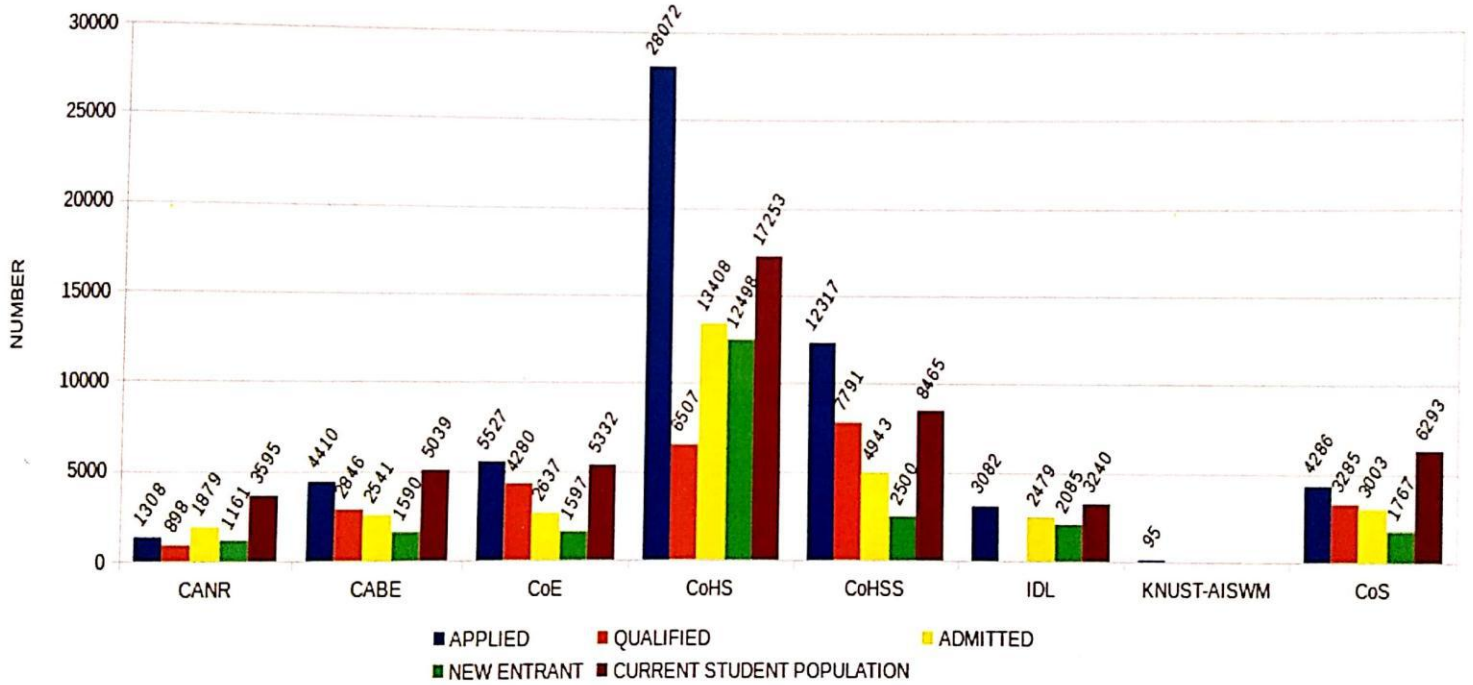


COLLEGE	1st class	2nd (upper)	2nd (lower)	Pass	TOTAL	PERCENTAGE				
CANR	36	7%	267	49%	181	33%	60	11%	544	9%
CABE	109	12%	523	57%	205	22%	76	8%	913	15%
CoE	108	13%	423	49%	259	30%	73	8%	863	14%
CoHS	48	6%	217	27%	57	7%	482	60%	804	13%
CoHSS	224	14%	790	48%	498	30%	123	8%	1635	27%
IDL	18	2%	195	21%	388	41%	339	36%	940	16%
CoS	28	10%	148	52%	36	13%	72	25%	284	5%
TOTAL	571	10%	2563	43%	1624	27%	1225	20%	5983	100%
PERCENT-AGE	10%	43%	27%	20%	100%					

GENDER	1st class	2nd (upper)	2nd (lower)	Pass	TOTAL	PERCENTAGE
MALE	477	1983	1310	799	4569	70%
FEMALE	182	862	440	476	1960	30%
TOTAL	659	2845	1750	1275	6529	100%
PERCENT-AGE	10%	44%	27%	20%	100%	

UNDERGRADUATE APPLICATION & ADMISSION INFORMATION BY COLLEGES  
(2017/18 ACADEMIC YEAR)

Fig. 4



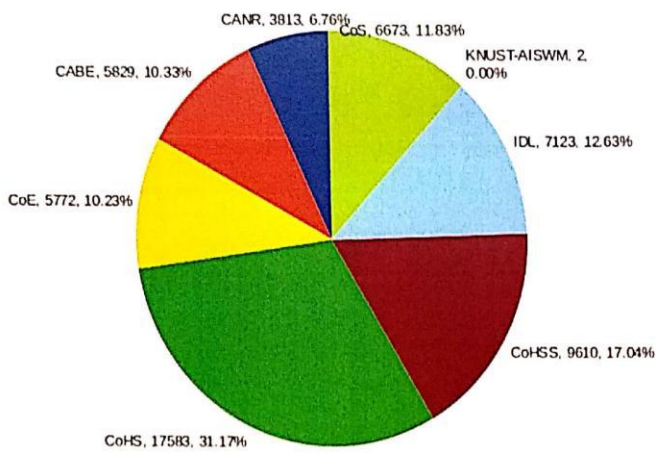
<b>STUDENT ENROLLMENT BY COLLEGE</b>				
College	Faculty	Gender		
		F	M	Total Result
AGRICULTURE AND NATURAL RESOURCES	Agriculture	591	1754	<b>2345</b>
	Forest Resources Technology	80	204	<b>284</b>
	Renewable Natural Resources	423	761	<b>1184</b>
CANR		1094	2719	<b>3813</b>
ART AND BUILT ENVIRONMENT	Art	826	1692	<b>2518</b>
	Built Environment	962	2349	<b>3311</b>
CABE		1788	4041	<b>5829</b>
ENGINEERING	Civil And Geo-Engineering	325	1749	<b>2074</b>
	Electrical And Computer Engineering	192	1146	<b>1338</b>
	Mechanical And Chemical Engineering	340	2020	<b>2360</b>
CoE		857	4915	<b>5772</b>
HEALTH SCIENCES	Allied Health Sciences	10269	3300	<b>13569</b>
	Dental School	116	91	<b>207</b>
	Pharmacy and Pharmaceutical Sciences	825	1066	<b>1891</b>
	School of Medical Sciences	832	903	<b>1735</b>
	School of Public Health	27	29	<b>56</b>
	School of Veterinary Medicine	26	99	<b>125</b>
CoHS		12095	5488	<b>17583</b>
HUMANITIES AND SOCIAL SCIENCES	KNUST School of Business	1084	1838	<b>2922</b>



	Law	362	427	789
	Social Sciences	2704	3195	5899
CoHSS		4150	5460	9610
INSTITUTE OF DISTANCE LEARNING	Institute of Distance Learning	2076	5047	7123
KNUST-AFRICA INSTITUTE OF SANITATION AND WASTE MANAGEMENT	KNUST-Africa Institute of Sanitation and Waste Management		2	2
SCIENCE	Biosciences	1200	1399	2599
	Mathematical and Computer Science	636	2062	2698
	Physical Sciences	333	1043	1376
CoS		2169	4504	6673
<b>Total Result</b>		24229	32176	56405

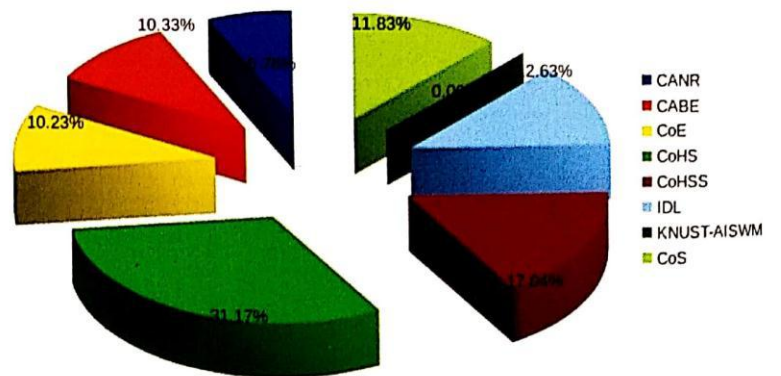
STUDENTS' ENROLEMENT BY COLLEGE

Fig. 5



STUDENTS' ENROLEMENT BY COLLEGE

Fig. 6



### UNDERGRADUATE ENROLLEMENT OF INTERNATIONAL STUDENTS BY GENDER, COLLEGE AND FACULTY

College	Faculty	Gender								
		F	M	Total						
					COLLEGE	FEMALE	MALE	TOTAL	PERCENTAGE	
CANR	Agriculture	0	5	5		CANR	0	5	5	1%
	<b>TOTAL</b>	<b>0</b>	<b>5</b>	<b>5</b>		<b>CABE</b>	<b>10</b>	<b>32</b>	<b>42</b>	<b>6%</b>
CABE	Art	3	3	6		CoE	38	161	199	27%
	Built Environment	7	29	36		CoHS	227	99	326	44%
	<b>TOTAL</b>	<b>10</b>	<b>32</b>	<b>42</b>		<b>CoHSS</b>	<b>52</b>	<b>42</b>	<b>94</b>	<b>13%</b>
CoE	Civil And Geo-Engineering	11	47	58		IDL	0	1	1	0%
	Electrical And Computer Engineering	12	46	58		CoS	40	41	81	11%
	Mechanical And Chemical Engineering	15	68	83		TOTAL	367	381	748	100%
	<b>TOTAL</b>	<b>38</b>	<b>161</b>	<b>199</b>		<b>PERCENTAGE</b>	<b>49%</b>	<b>51%</b>	<b>100%</b>	
CoHS	Allied Health Sciences	32	8	40						
	Dental School	18	1	19						
	Pharmacy and Pharmaceutical Sciences	97	53	150						
	School of Medical Sciences	78	35	113						
	School of Veterinary Medicine	2	2	4						
	<b>TOTAL</b>	<b>227</b>	<b>99</b>	<b>326</b>						



CoHSS	KNUST School of Business	15	21	36						
	Law	19	4	23						
	Social Sciences	18	17	35						
	TOTAL	52	42	94						
IDL	Institute of Distance Learning		1	1						
	TOTAL	0	1	1						
CoS	Biosciences	33	26	59						
	Mathematical and Computer Science	7	13	20						
	Physical Sciences		2	2						
	TOTAL	40	41	81						
<b>GRAND TOTAL</b>		<b>367</b>	<b>381</b>	<b>748</b>						

ENROLLEMENT OF INTERNATIONAL STUDENTS BY NATIONALITY AND GENDER			
Country	Gender		
	F	M	Total Result
Angola	1		1
Australia		1	1
Belgium	1		1
Benin		7	7
Burkina Faso	4	6	10
Burundi	1		1
Cameroon	27	23	50
Congo	1	8	9
Congo, Democratic Republic		2	2
Côte D'Ivoire	3	3	6
Equatorial Guinea	1	1	2
Ethiopia		1	1
France		2	2
Gabon	7	4	11
Gambia	5	28	33
Germany	1	1	2
India	1		1
Ivory Coast		1	1
Kenya	2	3	5
Lebanon		1	1

Liberia		7	7
Malawi	1	1	2
Mali	5	4	9
Niger	3	15	18
Nigeria	297	286	583
Pakistan	1	2	3
Rwanda	10	6	16
Senegal		1	1
Sierra Leone	2	5	7
South Africa		1	1
Sudan	2	2	4
Tanzania, United Republic of		2	2
Togo	1	1	2
Uganda	2	4	6
United States	3	1	4
Zambia	1		1
Zimbabwe	3	2	5
<b>Total Result</b>	<b>386</b>	<b>434</b>	<b>820</b>

### UNDERGRADUATE ENROLLEMENT OF GHANAIAN STUDENTS BY GENDER, COLLEGE AND FACULTY

College	Faculty	Gender			COLLEGE	FEMALE	MALE	TOTAL	PERCENTAGE
		F	M	Total Result					
CANR	Agriculture	550	1643	2193	CANR	1035	2555	3590	7%
	Forest Resources Technology	80	204	284	CABE	1574	3423	4997	10%
	Renewable Natural Resources	405	708	1113	CoE	741	4392	5133	11%
	<b>TOTAL</b>	<b>1035</b>	<b>2555</b>	<b>3590</b>	CoHS	11741	5186	16927	35%
CABE	Art	775	1566	2341	CoHSS	3730	4641	8371	17%
	Built Environment	799	1857	2656	IDL	879	2360	3239	7%
	<b>TOTAL</b>	<b>1574</b>	<b>3423</b>	<b>4997</b>	CoS	2030	4182	6212	13%
CoE	Civil And Geo-Engineering	252	1445	1697	<b>TOTAL</b>	<b>21730</b>	<b>26739</b>	<b>48469</b>	<b>100%</b>
	Electrical And Computer Engineering	178	1069	1247	<b>PERCENTAGE</b>	<b>45%</b>	<b>55%</b>	<b>100%</b>	
	Mechanical And Chemical Engineering	311	1878	2189					
	<b>TOTAL</b>	<b>741</b>	<b>4392</b>	<b>5133</b>					
CoHS	Allied Health Sciences	10218	3275	13493					
	Dental School	98	90	188					
	Pharmacy and Pharmaceutical Sciences	693	937	1630					
	School of Medical Sciences	708	787	1495					
	School of Veterinary Medicine	24	97	121					
	<b>TOTAL</b>	<b>11741</b>	<b>5186</b>	<b>16927</b>					





CoHSS	KNUST School of Business	783	1292	2075					
	Law	337	409	746					
	Social Sciences	2610	2940	5550					
	<b>TOTAL</b>	<b>3730</b>	<b>4641</b>	<b>8371</b>					
IDL	Institute of Distance Learning	879	2360	3239					
	<b>TOTAL</b>	<b>879</b>	<b>2360</b>	<b>3239</b>					
CoS	Biosciences	1104	1295	2399					
	Mathematical and Computer Science	608	1890	2498					
	Physical Sciences	318	997	1315					
	<b>TOTAL</b>	<b>2030</b>	<b>4182</b>	<b>6212</b>					
<b>GRAND TOTAL</b>		<b>21730</b>	<b>26739</b>	<b>48469</b>					

**FEE PAYING GHANAIAN STUDENTS BY GENDER, COLLEGE AND FACULTY (2017/18)**

College	Faculty	Gender			COLLEGE	FEMALE	MALE	TOTAL	PERCENTAGE
		FEMALE	MALE	Total					
CANR	Agriculture	15	18	33					
	Renewable Natural Resources	5	10	15	CANR	20	28	48	1%
	TOTAL	20	28	48	CABE	133	270	403	8%
CABE	Art	35	69	104	CoE	106	575	681	14%
	Built Environment	98	201	299	CoHS	1209	870	2079	42%
	TOTAL	133	270	403	CoHSS	551	628	1179	24%
CoE	Civil And Geo-Engineering	35	195	230	CoS	264	340	604	12%
	Electrical And Computer Engineering	53	241	294	TOTAL	2283	2711	4994	100%
	Mechanical And Chemical Engineering	18	139	157	PERCENTAGE	46%	54%	100%	
	TOTAL	106	575	681					
CoHS	Allied Health Sciences	372	120	492					
	Dental School	88	71	159					
	Pharmacy and Pharmaceutical Sciences	444	419	863					
	School of Medical Sciences	302	256	558					
	School of Veterinary Medicine	3	4	7					
	TOTAL	1209	870	2079					

CoHSS	KNUST School of Business	134	178	312					
	Law	210	244	454					
	Social Sciences	207	206	413					
	TOTAL	551	628	1179					
CoS	Biosciences	211	191	402					
	Mathematical and Computer Science	44	137	181					
	Physical Sciences	9	12	21					
	TOTAL	264	340	604					
<b>GRAND TOTAL</b>		<b>2283</b>	<b>2711</b>	<b>4994</b>					

ACADEMIC STAFF (SENIOR MEMBERS)

COLLEGE	FACULTY	DEPARTMENT	TOTAL		
			M	F	T
		Catholic Chaplaincy	1	0	1
		College of Art & Social Sciences	1	0	1
		KNUST Business School	0	1	1
		KNUST School of Business	1	0	1
		Library	6	4	10
		Office of Grants and Research	1	0	1
	<b>Total</b>	<b>10</b>	<b>5</b>	<b>15</b>	
	<b>Total</b>		<b>10</b>	<b>5</b>	<b>15</b>
CABE (College of Art and Built Environment)		Provost Office - College of Art and Built Environment	1	0	1
		<b>Total</b>	<b>1</b>	<b>0</b>	<b>1</b>
	Art	Communication Design	11	2	13
		Educational Innovations in Science and Technology	5	5	10
		Industrial Art	15	3	18
		Integrated Rural Art and Industry	9	2	11



		Painting and Sculpture	16	1	17
		Publishing Studies	9	3	12
		<b>Total</b>	<b>65</b>	<b>16</b>	<b>81</b>
	Built Environment	Architecture	17	2	19
		Building Technology	18	1	19
		Land Economy	14	0	14
		Planning	18	5	23
		<b>Total</b>	<b>67</b>	<b>8</b>	<b>75</b>
	Institute of Land Management and Administration	Centre For Settlements Studies	5	2	7
		<b>Total</b>	<b>5</b>	<b>2</b>	<b>7</b>
	<b>Total</b>		<b>138</b>	<b>26</b>	<b>164</b>
<b>CANR (College of Agriculture and Natural Resources)</b>		Bureau of Integrated Rural Development (BIRD)	5	2	7
		Provost Office - College of Agriculture & Natural Resources	2	0	2
		<b>Total</b>	<b>7</b>	<b>2</b>	<b>9</b>

	Agriculture	Agricultural Economics, Agribusiness & Extension	18	1	19
		Animal Science	12	3	15
		Crop and Soil Sciences	16	2	18
		Dairy/Beef Cattle Research Centre	1	0	1
		Horticulture	8	5	13
		KNUST Dairy/Beef Cattle Research Station	1	0	1
		<b>Total</b>	<b>56</b>	<b>11</b>	<b>67</b>
	Forest Resources Technology	Ecotourism and Forest Recreation	3	1	4
		Faculty of Forest Resources Technology	2	1	3
		Land Reclamation and Rehabilitation	3	0	3
		Social Forestry/Land Reclamation	2	0	2
		Social Forestry	1	0	1
		<b>Total</b>	<b>11</b>	<b>2</b>	<b>13</b>
	Renewable Natural Resources	Agroforestry	7	1	8
		Fisheries & Watershed Management	1	0	1
		Fisheries and Watershed Management	7	2	9
		Silviculture and Forest Management	8	4	12

		Wildlife and Range Management	8	0	8
		Wood Science and Technology	10	0	10
		<b>Total</b>	<b>41</b>	<b>7</b>	<b>48</b>
	<b>Total</b>		<b>115</b>	<b>22</b>	<b>137</b>
<b>CoE (College of Engineering)</b>		Provost Office - College of Engineering	0	1	1
		Technology Consultancy Centre	4	0	4
		<b>Total</b>	<b>4</b>	<b>1</b>	<b>5</b>
	Civil and Geo-Engineering	Civil Engineering	25	2	27
		Geological Engineering	11	0	11
		Geomatic Engineering	14	0	14
		Petroleum Engineering	9	0	9
		<b>Total</b>	<b>59</b>	<b>2</b>	<b>61</b>
	Electrical and Computer Engineering	Computer Engineering	14	1	15
		Electrical & Electronic Engineering	15	0	15
		<b>Total</b>	<b>29</b>	<b>1</b>	<b>30</b>
	Mechanical and Chemical Engineering	Agricultural and Biosystems Engineering	15	0	15
		Chemical Engineering	12	4	16
		Materials Engineering	9	2	11
		Mechanical Engineering	26	2	28
		<b>Total</b>	<b>62</b>	<b>8</b>	<b>70</b>
	<b>Total</b>		<b>154</b>	<b>12</b>	<b>166</b>

CoHS (College of Health Sciences)		Central Laboratory	1	0	1
		School of Public Health	4	0	4
		<b>Total</b>	<b>5</b>	<b>0</b>	<b>5</b>
Allied Health Sciences		Medical Laboratory Technology	11	1	12
		Nursing	6	5	11
		Sonography	0	1	1
		Sports & Exercise Sciences	3	1	4
		<b>Total</b>	<b>20</b>	<b>8</b>	<b>28</b>
Dental School		Basic Diagnostic Oral Health	0	1	1
		Community Dentistry	1	0	1
		Dental School	5	0	5
		Oral & Maxillofacial Sciences	2	0	2
		<b>Total</b>	<b>8</b>	<b>1</b>	<b>9</b>
Pharmacy and Pharmaceutical Sciences		Herbal Medicine	3	0	3
		Pharmaceutical Chemistry	7	1	8
		Pharmaceutics	9	3	12
		Pharmacognosy	6	2	8



	Pharmacology	10	2	12
	Pharmacy Practice	4	3	7
	<b>Total</b>	<b>39</b>	<b>11</b>	<b>50</b>
School of Medical Sciences	Anaesthesiology and Intensive Care	7	0	7
	Anatomy	6	1	7
	Behavioural Sciences	3	3	6
	Child Health	10	3	13
	Clinical Microbiology	9	2	11
	Community Health	13	1	14
	Eye, Ear, Nose And Throat	8	1	9
	Medicine	14	7	21
	Molecular Medicine	7	2	9
	Obstetrics and Gynaecology	13	0	13
	Pathology	3	0	3
	Physiology	4	1	5
	Radiology	4	1	5
	Surgery	10	0	10
	<b>Total</b>	<b>111</b>	<b>22</b>	<b>133</b>
School of Public Health	Epidemiology and Biostatistics	1	0	1

		Global & International Health	3	0	3
		<b>Total</b>	<b>4</b>	<b>0</b>	<b>4</b>
	School of Veterinary Medicine	School of Veterinary Medicine	13	0	13
		Veterinary Clinical Studies	0	1	1
		Veterinary Pathobiology	1	0	1
		Veterinary Public Health, Food Hygiene and Food Safety	2	0	2
		<b>Total</b>	<b>16</b>	<b>1</b>	<b>17</b>
	<b>Total</b>		<b>203</b>	<b>43</b>	<b>246</b>
CoHSS (College of Humanities and Social Sciences)		Provosts Office - (CoHSS)	1	0	1
		Total	1	0	1
		Centre for Cultural and African Studies	4	0	4
		Total	4	0	4
	Law	Commercial Law	5	3	8
		Deans Office - Faculty of Law	0	1	1
		Private Law	1	2	3
		Public Law	5	1	6

		<b>Total</b>	<b>11</b>	<b>7</b>	<b>18</b>
	School of Business	Accounting and Finance	12	2	14
		Human Resource and Organisational Development	4	4	8
		Marketing and Corporate Strategy	9	1	10
		School of Business	0	1	1
		Supply Chain and Information Systems	9	2	11
		<b>Total</b>	<b>34</b>	<b>10</b>	<b>44</b>
	Social Sciences	Economics	12	2	14
		English	11	5	16
		Geography & Rural Development	2	0	2
		Geography and Rural Development	15	3	18
		History & Political Studies	2	0	2
		History and Political Studies	9	0	9
		Modern Languages	12	5	17
		Religious Studies	15	0	15
		Sociology and Social Work	15	4	19
		Total	93	19	112
	<b>Total</b>		<b>143</b>	<b>36</b>	<b>179</b>
CoS (College of Science)		Provost Office - College of Science	1	0	1

		<b>Total</b>	<b>1</b>	<b>0</b>	<b>1</b>
	Biosciences	Biochemistry and Biotechnology	16	5	21
		Food Science and Technology	11	4	15
		Optometry and Visual Science	8	4	12
		Theoretical and Applied Biology	24	2	26
		<b>Total</b>	<b>59</b>	<b>15</b>	<b>74</b>
	Physical and Computational Sciences	Chemistry	18	3	21
		Computer Science	12	0	12
		Mathematics	33	1	34
		Physics	24	0	24
		<b>Total</b>	<b>87</b>	<b>4</b>	<b>91</b>
	<b>Total</b>		<b>147</b>	<b>19</b>	<b>166</b>
IDL (Institute of Distance Learning)	Institute of Distance Learning	Centre For Distance and Continuing Education (CDCE)	1	0	1
		<b>Total</b>	<b>1</b>	<b>0</b>	<b>1</b>
	<b>Total</b>		<b>1</b>	<b>0</b>	<b>1</b>
<b>Grand Total</b>			<b>911</b>	<b>163</b>	<b>1074</b>



SENIOR MEMBERS( ADMIN)

COLLEGE	FACULTY	DEPARTMENT	TOTAL		
			M	F	T
		Academic/Student Affairs	0	1	1
		Admissions Office	0	1	1
		Affiliations Office	0	1	1
		College of Art & Social Sciences	1	0	1
		Dean of Students	2	4	6
		Development Office	5	2	7
		Estate Office	1	0	1
		Estate Organisation	0	1	1
		Examinations Office	0	1	1
		Faculty of Art	0	1	1
		Finance Office	16	3	19
		General Administration	1	2	3
		GUSSS Secretariat	1	1	2
		HRD	4	1	5
		Internal Audit	3	1	4
		International Programmes Office (IPO)	0	1	1

	K-AISWAM	1	1	2
	KNUST Accra Office	1	0	1
	KNUST Basic Schools	1	1	2
	KNUST Counselling Centre	0	2	2
	Legal & Welfare	1	2	3
	Library	0	1	1
	Maintenance and Essential Services Organisation	0	1	1
	Photocopy Unit	1	0	1
	Printing Press	1	1	2
	Procurement Office	2	1	3
	Protestant Chaplaincy	2	0	2
	Quality Assurance & Planning Unit	0	1	1
	Registrar's Office	2	1	3
	Roman Catholic Chaplaincy	1	0	1
	School of Graduate Studies	2	0	2
	Security Service	1	0	1
	Sports Directorate	1	0	1
	UITS	2	0	2
	Unity Hall	0	1	1
	University Hall	1	0	1

		University Hospital	13	9	22
		University Relations (Publications)	1	0	1
		University Relations Office	1	1	2
		Vice-Chancellor's Office	12	1	13
		<b>Total</b>	<b>81</b>	<b>45</b>	<b>126</b>
	<b>Total</b>		<b>81</b>	<b>45</b>	<b>126</b>
<b>CABE (College of Art and Built Environment)</b>		Provosts Office - (CABE)	1	0	1
		<b>Total</b>	<b>1</b>	<b>0</b>	<b>1</b>
	Art	Deans Office - Faculty of Art	1	0	1
		<b>Total</b>	<b>1</b>	<b>0</b>	<b>1</b>
	Built Environment	Deans Office - Faculty of Built Environment	0	1	1
		<b>Total</b>	<b>0</b>	<b>1</b>	<b>1</b>
	<b>Total</b>		<b>2</b>	<b>1</b>	<b>3</b>
<b>CANR (College of Agriculture and Natural Resources)</b>		College of Agric. & Natural Resources	1	0	1
		Provost Office - College of Agriculture & Natural Resources	1	0	1

		Total	2	0	2
	Agriculture	Deans Office - Faculty of Agriculture	0	1	1
		<b>Total</b>	<b>0</b>	<b>1</b>	<b>1</b>
	Renewable Natural Resources	Deans Office - Faculty of Renewable Natural Resources	0	1	1
		Total	0	1	1
	<b>Total</b>		<b>2</b>	<b>2</b>	<b>4</b>
<b>CoE (College of Engineering)</b>		College of Engineering	1	0	1
		Provost Office - College of Engineering	1	0	1
		Provosts Office - (College of Engineering)	2	0	2
		<b>Total</b>	<b>4</b>	<b>0</b>	<b>4</b>
	<b>Total</b>		<b>4</b>	<b>0</b>	<b>4</b>
<b>CoHS (College of Health Sciences)</b>		College of Health Sciences	2	1	3
		Provost Office - College of Health Sciences	1	0	1
		School of Public Health	1	0	1
		<b>Total</b>	<b>4</b>	<b>1</b>	<b>5</b>



	Allied Health Sciences	Deans Office - (Faculty of Allied Health Sciences)	0	1	1
		<b>Total</b>	<b>0</b>	<b>1</b>	<b>1</b>
	Dental School	Dental School	2	0	2
		<b>Total</b>	<b>2</b>	<b>0</b>	<b>2</b>
	Pharmacy and Pharmaceutical Sciences	Deans Office - Faculty of Pharmacy	1	0	1
		Pharmaceutical Chemistry	1	0	1
		<b>Total</b>	<b>2</b>	<b>0</b>	<b>2</b>
	School of Veterinary Medicine	School of Veterinary Medicine	1	0	1
		<b>Total</b>	<b>1</b>	<b>0</b>	<b>1</b>
	<b>Total</b>		<b>9</b>	<b>2</b>	<b>11</b>
	<b>CoHSS (College of Humanities and Social Sciences)</b>	Provost Office - College of Art & Social Sciences	1	0	1
		Provosts Office - (CoHSS)	2	0	2
		<b>Total</b>	<b>3</b>	<b>0</b>	<b>3</b>
	Law	Deans Office - Faculty of Law	1	0	1

		Faculty of Law	1	0	1
		Total	2	0	2
	School of Business	Deans Office - School of Business	1	0	1
		School of Business	0	1	1
		Total	1	1	2
	Social Sciences	Deans Office - Faculty of Social Sciences	1	0	1
		<b>Total</b>	<b>1</b>	<b>0</b>	<b>1</b>
	<b>Total</b>		<b>7</b>	<b>1</b>	<b>8</b>
CoS (College of Science)		Provost Office - College of Science	2	1	3
		Provosts Office - (College of Science)	1	0	1
		<b>Total</b>	<b>3</b>	<b>1</b>	<b>4</b>
	<b>Total</b>		<b>3</b>	<b>1</b>	<b>4</b>
IDL (Institute of Distance Learning)		Institute of Distance Learning	7	2	9
		Total	7	2	9
	<b>Total</b>		<b>7</b>	<b>2</b>	<b>9</b>
<b>Grand Total</b>			<b>115</b>	<b>54</b>	<b>169</b>

**SENIOR STAFF**

COLLEGE	FACULTY	DEPARTMENT	TOTAL		
			M	F	T
		Academic	1	2	3
		Accra Guesthouse	2	6	8
		Admissions Office	2	1	3
		Affiliations Office	0	1	1
		Africa Hall	2	2	4
		Centre for Business Dev	0	1	1
		Clinical Students Hostel	3	0	3
		College of Art & Social Sciences	2	0	2
		Dean of Students	3	1	4
		Development Office	10	2	12
		Environmental Quality Unit	4	1	5
		Estate Office	3	2	5
		Estate Organisation	1	0	1
		Examinations Office	1	1	2
		Faculty of Art	0	1	1
		Finance Office	27	14	41

	Fire Preventive Unit	5	0	5
	General Administration	5	2	7
	Grounds & Gardens	2	1	3
	Guest House (Kumasi)	0	1	1
	GUSSS Secretariat	1	0	1
	Health Service	2	0	2
	HRD	5	3	8
	Independence Hall	5	2	7
	Internal Audit	6	4	10
	International Programmes Office (IPO)	0	1	1
	KNUST Basic Schools	85	103	188
	KNUST Business School	1	2	3
	KNUST Counselling Centre	0	1	1
	KNUST Day Care Centre	0	1	1
	Library	17	17	34
	Maintenance	60	2	62
	Office of Grants and Research	1	1	2
	Pensions	1	0	1
	Photocopy Unit	5	2	7



		POSTGRADUATE HOSTEL	1	0	1		
		Printing Press	14	5	19		
		Procurement Office	7	3	10		
		Protestant Chaplaincy	1	0	1		
		Queen Elizabeth II Hall	8	0	8		
		Registrar's Office	5	4	9		
		Registrar's Offices	1	0	1		
		Republic Hall	7	1	8		
		Sanitary Department	4	0	4		
		School of Graduate Studies	3	5	8		
		Security Service	19	7	26		
		Senior Staff Club	2	3	5		
		Sports Directorate	3	1	4		
		Spring Hostel	2	0	2		
		Steven Paris Hostel	2	0	2		
		Transport	7	2	9		
		UITS	22	3	25		
		Unity Hall	6	1	7		
		University Hall	6	1	7		
		University Hospital	55	112	167		

		University Relations Office	1	2	3
		University Stores	1	0	1
		Vice-Chancellor's Office	6	5	11
		<b>Total</b>	<b>445</b>	<b>333</b>	<b>778</b>
	<b>Total</b>		<b>445</b>	<b>333</b>	<b>778</b>
<b>CABE (College of Art and Built Environment)</b>		Deans Office - (ILMAD)	0	1	1
		Provost Office - College of Art and Built Environment	9	6	15
		<b>Total</b>	<b>9</b>	<b>7</b>	<b>16</b>
	<b>Art</b>	Communication Design	6	0	6
		Deans Office - Faculty of Art	1	2	3
		Educational Innovations in Science and Technology	0	1	1
		Industrial Art	6	2	8
		Integrated Rural Art and Industry	3	3	6
		Painting and Sculpture	4	1	5
		Publishing Studies	4	3	7
		<b>Total</b>	<b>24</b>	<b>12</b>	<b>36</b>

	Built Environment	Building Technology	3	1	4
		Deans Office - Faculty of Built Environment	1	3	4
		Land Economy	0	1	1
		Planning	1	1	2
		<b>Total</b>	<b>5</b>	<b>6</b>	<b>11</b>
	Institute of Land Management and Administration	Centre for Settlement Studies	1	0	1
		Centre For Settlements Studies	3	0	3
		<b>Total</b>	<b>4</b>	<b>0</b>	<b>4</b>
		<b>Total</b>	<b>42</b>	<b>25</b>	<b>67</b>
CANR (College of Agriculture and Natural Resources)		Bureau of Integrated Rural Development (BIRD)	2	0	2
		College of Agric. & Natural Resources	6	4	10
		Provost Office - College of Agriculture & Natural Resources	3	5	8
		<b>Total</b>	<b>11</b>	<b>9</b>	<b>20</b>

	Agriculture	Agricultural Economics, Agribusiness & Extension	0	1	1		
		Agricultural Research Station	5	1	6		
		Animal Science	3	2	5		
		Crop and Soil Sciences	8	3	11		
		Deans Office - Faculty of Agriculture	2	3	5		
		Horticulture	7	1	8		
		KNUST Dairy/Beef Cattle Research Station	1	0	1		
		<b>Total</b>	<b>26</b>	<b>11</b>	<b>37</b>		
	Forest Resources Technology	Faculty of Forest Resources Technology	1	0	1		
		<b>Total</b>	<b>1</b>	<b>0</b>	<b>1</b>		
	Renewable Natural Resources	Agroforestry	1	1	2		
		Deans Office - Faculty of Renewable Natural Resources	4	3	7		
		Fisheries and Watershed Management	1	1	2		
		Silviculture and Forest Management	2	1	3		
		Wildlife and Range Management	1	2	3		



		Wood Science and Technology	4	0	4
		<b>Total</b>	<b>13</b>	<b>8</b>	<b>21</b>
	<b>Total</b>		<b>51</b>	<b>28</b>	<b>79</b>
<b>CoE (College of Engineering)</b>		College of Engineering	4	2	6
		Provost Office - College of Engineering	10	5	15
		Technology Consultancy Centre	3	3	6
		<b>Total</b>	<b>17</b>	<b>10</b>	<b>27</b>
	<b>Civil and Geo-Engineering</b>	Civil Engineering	6	0	6
		Deans Office - Faculty of Civil And Geomatic Engineering	0	1	1
		Geological Engineering	0	2	2
		Geomatic Engineering	6	4	10
		Petroleum Engineering	5	2	7
		Regional Water and Environmental Sanitation Centre Kumasi (RWESCK)	1	0	1
		<b>Total</b>	<b>18</b>	<b>9</b>	<b>27</b>

	Electrical and Computer Engineering	Computer Engineering	1	2	3
		Deans Office - Faculty of Electrical and Computer Engineering	0	1	1
		Electrical & Electronic Engineering	9	2	11
		<b>Total</b>	<b>10</b>	<b>5</b>	<b>15</b>
	Mechanical and Chemical Engineering	Agricultural and Biosystems Engineering	5	1	6
		Chemical Engineering	6	1	7
		Materials Engineering	1	1	2
		Mechanical Engineering	16	0	16
		<b>Total</b>	<b>28</b>	<b>3</b>	<b>31</b>
	<b>Total</b>		<b>73</b>	<b>27</b>	<b>100</b>
<b>CoHS (College of Health Sciences)</b>		Central Laboratory	3	1	4
		College of Health Sciences	7	1	8
		Hale and Hearty Sports Centre	1	0	1
		Provost Office - College of Health Sciences	5	3	8

	School of Public Health	0	1	1
	<b>Total</b>	<b>16</b>	<b>6</b>	<b>22</b>
Allied Health Sciences	Deans Office - (Faculty of Allied Health Sciences)	1	0	1
	Medical Laboratory Technology	0	1	1
	Nursing	0	1	1
	Sonography	2	1	3
	Sports & Exercise Sciences	1	0	1
	<b>Total</b>	<b>4</b>	<b>3</b>	<b>7</b>
Dental School	Dental School	2	2	4
	Dentistry	0	1	1
	<b>Total</b>	<b>2</b>	<b>3</b>	<b>5</b>
Pharmacy and Pharmaceutical Sciences	Deans Office - Faculty of Pharmacy	3	2	5
	Herbal Medicine	1	2	3
	Pharmaceutical Chemistry	2	3	5
	Pharmaceutics	5	1	6
	Pharmacognosy	4	0	4
	Pharmacology	6	0	6
	Pharmacy Practice	0	1	1

	<b>Total</b>	<b>21</b>	<b>9</b>	<b>30</b>
School of Medical Sciences	Anatomy	6	2	8
	Behavioural Sciences	1	1	2
	Centre for Disability and Rehabilitation Studies	1	1	2
	Child Health	0	1	1
	Clinical Microbiology	1	1	2
	Community Health	1	0	1
	Deans Office - School of Medical Sciences	2	3	5
	Eye, Ear, Nose And Throat	2	1	3
	Medicine	0	1	1
	Molecular Medicine	4	0	4
	Obstetrics and Gynaecology	1	0	1
	Pathology	0	1	1
	Physiology	0	1	1
	School of Medical Sciences	2	1	3
	Simulation Centre	4	0	4
	SMS Clinical Hostel - Komfo Anokye	5	0	5
	Surgery	1	1	2



		Total	31	15	46
	School of Veterinary Medicine	School of Veterinary Medicine	3	2	5
		<b>Total</b>	<b>3</b>	<b>2</b>	<b>5</b>
	<b>Total</b>		<b>77</b>	<b>38</b>	<b>115</b>
<b>CoHSS (College of Humanities and Social Sciences)</b>		Provost Office - College of Art & Social Sciences	2	2	4
		Provosts Office - (CoHSS)	4	3	7
		Total	6	5	11
		Centre for Cultural and African Studies	3	3	6
		<b>Total</b>	<b>3</b>	<b>3</b>	<b>6</b>
	Law	Deans Office - Faculty of Law	4	1	5
		Faculty of Law	2	1	3
		Total	6	2	8
	School of Business	Deans Office - School of Business	0	1	1
		Human Resource and Organisational Development	0	1	1

		Marketing and Corporate Strategy	0	1	1
		School of Business	1	1	2
		Total	1	4	5
	Social Sciences	Deans Office - Faculty of Social Sciences	3	1	4
		Economics	1	0	1
		English	0	1	1
		Geography and Rural Development	1	0	1
		History and Political Studies	0	1	1
		Modern Languages	0	1	1
		Religious Studies	0	1	1
		Sociology and Social Work	0	1	1
		Total	5	6	11
	<b>Total</b>		<b>21</b>	<b>20</b>	<b>41</b>
CoS (College of Science)		College of Science	9	2	11
		Provost Office - College of Science	8	1	9
		Total	17	3	20
	Biosciences	Biochemistry and Biotechnology	5	2	7
		Deans Office - (Faculty of Biosciences)	1	0	1

		Food Science and Technology	3	3	6
		Optometry and Visual Science	0	2	2
		Theoretical and Applied Biology	8	1	9
		Total	17	8	25
	Physical and Computational Sciences	Chemistry	9	4	13
		Computer Science	3	2	5
		Mathematics	1	1	2
		Physics	10	2	12
		Physics	0	1	1
		Total	23	10	33
	<b>Total</b>		<b>57</b>	<b>21</b>	<b>78</b>
IDL (Institute of Distance Learning)		Distance Learning	1	0	1
		Institute of Distance Learning	10	4	14
		Total	11	4	15
	<b>Total</b>		<b>11</b>	<b>4</b>	<b>15</b>
<b>Grand Total</b>			<b>777</b>	<b>496</b>	<b>1273</b>

JUNIOR STAFF					
			TOTAL		
COLLEGE	FACULTY	DEPARTMENT	M	F	T
		Accra Guesthouse	7	5	12
		Africa Hall	10	2	12
		Allied Health Sciences	0	1	1
		Botanical Gardens	4	0	4
		Central Administration	1	0	1
		Centre for Business Dev	2	0	2
		Clinical Students Hostel	1	0	1
		College of Arch. & Planning	1	0	1
		Community Centre	1	0	1
		Dean of Students	13	8	21
		Development Office	5	1	6
		Environmental Quality Unit	9	0	9
		Estate Office	10	2	12
		Estate Organisation	7	5	12
		Examinations Office	2	0	2
		Finance Office	2	2	4



	Fire Preventive Unit	2	0	2
	General Administration	2	2	4
	Grounds & Gardens	18	7	25
	Guest House (Kumasi)	1	1	2
	GUSSS Secretariat	99	14	113
	Hale and Hearty	1	0	1
	HRD	2	1	3
	Independence Hall	8	0	8
	Internal Audit	1	0	1
	International Programmes Office (IPO)	0	1	1
	KNUST Basic Schools	19	23	42
	KNUST Business School	0	2	2
	KNUST Day Care Centre	0	1	1
	Legal & Welfare	1	0	1
	Library	16	14	30
	Maintenance	58	3	61
	Photocopy Unit	5	0	5
	POSTGRADUATE HOSTEL	0	1	1
	Printing Press	13	5	18

	Procurement Office	3	0	3
	Protestant Chaplaincy	2	0	2
	Queen Elizabeth II Hall	4	0	4
	Registrar's Office	4	2	6
	Registrar's Offices	3	0	3
	Republic Hall	12	2	14
	Roman Catholic Chaplaincy	1	1	2
	Sanitary Department	74	3	77
	Security Service	225	17	242
	Security Services	3	0	3
	Senior Staff Club	4	3	7
	SMS	1	0	1
	Sports Directorate	7	0	7
	Spring Hostel	1	0	1
	Steven Paris Hostel	6	0	6
	Student Affairs	1	0	1
	Swimming Pool	1	0	1
	Transport	10	0	10
	UTS	0	2	2
	Unity Hall	9	0	9

		University Hall	11	0	11
		University Hospital	22	17	39
		University Relations (Publications)	0	1	1
		University Stores	0	1	1
		Vice-Chancellor's Office	4	0	4
		<b>Total</b>	<b>729</b>	<b>150</b>	<b>879</b>
	<b>Total</b>		<b>729</b>	<b>150</b>	<b>879</b>
<b>CABE (College of Art and Built Environment)</b>		Provost Office - College of Art and Built Environment	10	2	12
		<b>Total</b>	<b>10</b>	<b>2</b>	<b>12</b>
	<b>Art</b>	Communication Design	2	0	2
		Educational Innovations in Science and Technology	2	1	3
		Industrial Art	4	0	4
		Painting and Sculpture	5	2	7
		Publishing Studies	1	0	1
		<b>Total</b>	<b>14</b>	<b>3</b>	<b>17</b>
	<b>Built Environment</b>	Architecture	1	0	1
		Building Technology	3	0	3

		Land Economy	1	0	1
		Planning	1	1	2
		Total	6	1	7
	Institute of Land Management and Administration	Centre For Settlements Studies	7	0	7
		Total	7	0	7
	<b>Total</b>		<b>37</b>	<b>6</b>	<b>43</b>
<b>CANR (College of Agriculture and Natural Resources)</b>		Bureau of Integrated Rural Development (BIRD)	2	1	3
		Provost Office - College of Agriculture & Natural Resources	7	3	10
		Total	9	4	13
	Agriculture	Agricultural Economics, Agribusiness & Extension	1	0	1
		Agricultural Research Station	9	3	12
		Animal Science	6	0	6
		Crop and Soil Sciences	11	2	13
		Deans Office - Faculty of Agriculture	2	0	2



		Horticulture	7	0	7
		KNUST Dairy/Beef Cattle Research Station	8	2	10
		<b>Total</b>	<b>44</b>	<b>7</b>	<b>51</b>
	Renewable Natural Resources	Deans Office - Faculty of Renewable Natural Resources	8	0	8
		Faculty of Renewable Natural Resources	1	0	1
		<b>Total</b>	<b>9</b>	<b>0</b>	<b>9</b>
	<b>Total</b>		<b>62</b>	<b>11</b>	<b>73</b>
<b>CoE (College of Engineering)</b>		College of Engineering	1	0	1
		Provost Office - College of Engineering	13	3	16
		Technology Consultancy Centre	1	0	1
		<b>Total</b>	<b>15</b>	<b>3</b>	<b>18</b>
	Civil and Geo-Engineering	Geomatic Engineering	3	1	4
		<b>Total</b>	<b>3</b>	<b>1</b>	<b>4</b>

	Electrical and Computer Engineering	Electrical & Electronic Engineering	1	0	1
		Total	1	0	1
	Mechanical and Chemical Engineering	Agricultural and Biosystems Engineering	4	1	5
		Chemical Engineering	0	1	1
		Mechanical Engineering	3	1	4
		<b>Total</b>	<b>7</b>	<b>3</b>	<b>10</b>
	<b>Total</b>		<b>26</b>	<b>7</b>	<b>33</b>
<b>CoHS (College of Health Sciences)</b>		College of Health Sciences	1	0	1
		Hale and Hearty Sports Centre	0	1	1
		Provost Office - College of Health Sciences	12	1	13
		<b>Total</b>	<b>13</b>	<b>2</b>	<b>15</b>
	Allied Health Sciences	Sports & Exercise Sciences	1	0	1
		Sports and Exercise Science	1	0	1
		<b>Total</b>	<b>2</b>	<b>0</b>	<b>2</b>

	Pharmacy and Pharmaceutical Sciences	Deans Office - (Faculty of Pharmacy)	1	0	1	
		Pharmaceutical Chemistry	3	0	3	
		Pharmaceutics	2	0	2	
		Pharmacognosy	2	0	2	
		Pharmacology	2	0	2	
		Pharmacy Practice	1	0	1	
		Pharmacy Practices	2	0	2	
		<b>Total</b>	<b>13</b>	<b>0</b>	<b>13</b>	
		School of Medical Sciences	Anatomy	5	0	5
			Deans Office - School of Medical Sciences	2	0	2
			Obstetrics and Gynaecology	1	0	1
			Pathology	0	1	1
			Physiology	1	0	1
			SMS Clinical Hostel - Komfo Anokye	16	0	16
			<b>Total</b>	<b>25</b>	<b>1</b>	<b>26</b>
		<b>Total</b>		<b>53</b>	<b>3</b>	<b>56</b>

CoHSS (College of Humanities and Social Sciences)		Provost Office - College of Humanities Social Sciences	8	5	13
		<b>Total</b>	<b>8</b>	<b>5</b>	<b>13</b>
		Centre for Cultural and African Studies	1	0	1
		<b>Total</b>	<b>1</b>	<b>0</b>	<b>1</b>
Law		Deans Office - Faculty of Law	1	2	3
		<b>Total</b>	<b>1</b>	<b>2</b>	<b>3</b>
Social Sciences		Deans Office - Faculty of Social Sciences	2	2	4
		Economics	1	0	1
		Geography and Rural Development	1	0	1
		Social Science	0	1	1
		<b>Total</b>	<b>4</b>	<b>3</b>	<b>7</b>
	<b>Total</b>		<b>14</b>	<b>10</b>	<b>24</b>
CoS (College of Science)		College of Science	2	0	2
		Provost Office - College of Science	5	4	9
		<b>Total</b>	<b>7</b>	<b>4</b>	<b>11</b>
Biosciences		Biochemistry and Biotechnology	2	1	3



		Deans Office - (Faculty of Biosciences)	0	1	1
		Optometry and Visual Science	1	0	1
		Theoretical and Applied Biology	2	0	2
		<b>Total</b>	<b>5</b>	<b>2</b>	<b>7</b>
	Physical and Computational Sciences	Chemistry	2	0	2
		Computer Science	1	0	1
		<b>Total</b>	<b>3</b>	<b>0</b>	<b>3</b>
	<b>Total</b>		<b>15</b>	<b>6</b>	<b>21</b>
<b>IDL (Institute of Distance Learning)</b>		Distance Learning	0	1	1
		Institute of Distance Learning	4	2	6
		<b>Total</b>	<b>4</b>	<b>3</b>	<b>7</b>
	<b>Total</b>		<b>4</b>	<b>3</b>	<b>7</b>
<b>Grand Total</b>			<b>940</b>	<b>196</b>	<b>1136</b>



DESIGN PRESS  
C A B E , K N U S T  
024 468 5900 / 024 428 4461