



KWAME NKURUMAH UNIVERSITY
OF SCIENCE AND TECHNOLOGY, KUMASI

Basic Statistics for 54th Congregation

September, 2020

ABSTRACT

The objective of this publication is to present to you, our guest, and the general public attending our 54th congregation, statistical information about the Kwame Nkrumah University of Science and Technology (KNUST), Kumasi. This booklet contains information covering staff strength and student population for the 2019/2020 academic year. For this academic year, we received a total of 70,338 applications, of which 37,873 (54%) were males and 32,465 (46%) were females. Of this number, only 43,892 were admitted - of which 35,214 enrolled. Our current student population stands at 74,358 with 42,665 (57%) males and 31,693 (43%) females. The above figures, however, are inclusive of Diploma students from various Health Training Institutions throughout the country. KNUST currently has an international student population of 676 made up of 363 (54%) males and 323 (42%) females from 46 countries. Our current staff strength also stands at 3,036 with 2,238 (74%) males and 798 (26%) females. A total of 10,519 undergraduates – made up of 6,404 (61%) males and 4,115 (39%) females are being presented for this graduation, as well as 156 postgraduates, made up of 111 (71%) males and 45 (29%) females.

CONTENTS

Graduands Distribution For Graduate Programmes By College, Faculty, Class And Gender	1
Graduands Distribution For Post Graduate Programmes By College, Faculty, Class And Gender	3
Application And Admission Info By College And Gender	4
Current Student Information By Gender	4
Application And Admission Information By Colleges	5
Application And Admission Info By College, Faculty And Gender	7
Undergraduate Application And Admission Info By College And Gender	10
Post Graduate Application And Admission Info By College And Gender	11
Student Enrolment By College, Faculty And Gender	12
Undergraduate Enrolment Of Ghanaian Students	14
Post Graduate Enrolment Of Ghanaian Students	15
Enrolment By International Students	16
Enrolment By Students By Nationality	17
Undergraduate Enrolment Of International Students	18
Post Graduate Enrolment Of International Students	19
Gender Distribution (Junior Staff)	20
Gender Distribution (Senior Staff)	26
Gender Distribution Senior Member - Academic)	35
Gender Distribution (Senior Member - Administrative)	42
Age Distribution	46
Age Distribution Of Staff (Colleges)	47
Halls Of Residence	50
Approved Hostels By Occupancy Of Students	51

LIST OF FIGURES

Figure 1: Gender Distribution	4
Figure 2: Application and Admission Information	5
Figure 3: Application and Admission Information	6
Figure 4 Application and Admission Trends	6
Figure 5: Student enrolment by gender, college and faculty	13

GRADUANDS DISTRIBUTION FOR GRADUATE PROGRAMMES BY COLLEGE, FACULTY, CLASS AND GENDER

COLLEGE	FACULTY	FIRST CLASS			SECOND CLASS (UPPER DIVISION)			SECOND CLASS (LOWER DIVISION)			PASS			DISTINCTION			TOTAL		
		GENDER		TOTAL	GENDER		TOTAL	GENDER		TOTAL	GENDER		TOTAL	GENDER		TOTAL	TOTAL		TOTAL
		M	F		M	F		M	F		M	F		M	F		M	F	
AGRICULTURE AND NATURAL RESOURCES	Agriculture	26	4	30	146	77	223	114	46	160	9	1	10	0	0	0	295	128	423
	Renewable and Natural Resources	7	6	13	76	57	133	80	66	146	5	1	6	0	0	0	168	130	298
	TOTAL	33	10	43	222	134	356	194	112	306	14	2	16	0	0	0	463	258	721
ARTS AND BUILT ENVIRONMENT	Art	33	47	80	219	149	368	56	20	76	0	0	0	0	0	0	308	216	524
	Built Environment	41	25	66	270	171	441	174	91	265	11	1	12	0	0	0	496	288	784
	TOTAL	74	72	146	489	320	809	230	111	341	11	1	12	0	0	0	804	504	1308
ENGINEERING	Civil and Geo-Engineering	84	21	105	167	53	220	71	16	87	4	0	4	0	0	0	326	90	416
	Electrical and Computer Engineering	72	10	82	122	27	149	63	11	74	0	0	0	0	0	0	257	48	305
	Mechanical and Chemical Engineering	53	17	70	260	53	313	164	31	195	6	0	6	0	0	0	483	101	584
	TOTAL	209	48	257	549	133	682	298	58	356	10	0	10	0	0	0	1066	239	1305
HEALTH SCIENCES	Allied Health Sciences	12	11	23	64	170	234	29	69	98	1	1	2	0	0	0	106	251	357
	Pharmacy and Pharmaceutical Sciences	2	0	2	10	7	17	13	7	20	183	107	290	0	0	0	208	121	329
	KNUST School of Medicine and Dentistry	0	0	0	0	0	0	0	0	0	269	210	479	0	0	0	269	210	479

GRADUANDS DISTRIBUTION FOR GRADUATE PROGRAMMES BY COLLEGE, FACULTY, CLASS AND GENDER

COLLEGE	FACULTY	FIRST CLASS			SECOND CLASS (UPPER DIVISION)			SECOND CLASS (LOWER DIVISION)			PASS			DISTINCTION			TOTAL		
		GENDER		TOTAL	GENDER		TOTAL	GENDER		TOTAL	GENDER		TOTAL	GENDER		TOTAL	TOTAL		TOTAL
		M	F		M	F		M	F		M	F		M	F		M	F	
	School of Public Health	3	9	12	17	32	49	2	5	7	0	0	0	0	0	0	22	46	68
	School of Veterinary Medicine	0	0	0	0	0	0	0	0	0	20	1	21	0	0	0	20	1	21
	TOTAL	17	20	37	91	209	300	44	81	125	473	319	792	0	0	0	625	629	1254
HUMANITIES AND SOCIAL SCIENCES	Law	6	2	8	25	45	70	58	44	102	2	0	2	0	0	0	91	91	182
	Social Sciences	121	113	234	367	476	843	249	271	520	12	6	18	0	0	0	749	866	1615
	KNUST School of Business	63	51	114	124	99	223	90	53	143	3	0	3	0	0	0	280	203	483
	TOTAL	190	166	356	516	620	1136	397	368	765	17	6	23	0	0	0	1120	1160	2280
SCIENCE	Biosciences	60	49	109	173	194	367	75	126	201	22	6	28	0	0	0	330	375	705
	Physical and Computational Sciences	113	30	143	360	133	493	268	115	383	9	1	10	0	0	0	750	279	1029
	TOTAL	173	79	252	533	327	860	343	241	584	31	7	38	0	0	0	1080	654	1734
INSTITUTE OF DISTANCE LEARNING	Institute of Distance Learning	34	10	44	424	238	662	568	340	908	206	81	287	14	2	16	1246	671	1917
	TOTAL	730	405	1135	2824	1981	4805	2074	1311	3385	762	416	1178	14	2	16	6404	4115	10519

GRADUANDS DISTRIBUTION FOR POST GRADUATE PROGRAMMES BY COLLEGE, FACULTY, CLASS AND GENDER

COLLEGE	FACULTY	MASTERS			PHD			TOTAL		TOTAL
		GENDER		TOTAL	GENDER		TOTAL	M	F	
		M	F		M	F				
AGRICULTURE AND NATURAL RESOURCES	Agriculture	15	6	21	5	0	5	20	6	26
	Renewable and Natural Resources	0	0	0	1	0	1	1	0	1
	TOTAL	15	6	21	6	0	6	21	6	27
ARTS AND BUILT ENVIRONMENT	Art	8	3	11	0	0	0	8	3	11
	Built Environment	0	0	0	2	2	4	2	2	4
	TOTAL	8	3	11	2	2	4	10	5	15
ENGINEERING	Civil and Geo- Engineering	1	0	1	3	0	3	4	0	4
	Mechanical and Chemical Engineering	9	2	11	1	0	1	10	2	12
	TOTAL	10	2	12	4	0	4	14	2	16
HEALTH SCIENCES	Allied Health Sciences	1	2	3	0	0	0	1	2	3
	Pharmacy and Pharmaceutical Sciences	1	4	5	1	1	2	2	5	7
	KNUST School of Medicine and Dentistry	10	4	14	0	0	0	10	4	14
	School of Public Health	1	0	1	0	0	0	1	0	1
	TOTAL	13	10	23	1	1	2	14	11	25
HUMANITIES AND SOCIAL SCIENCES	Law	1	0	1	0	0	0	1	0	1
	Social Sciences	2	2	4	1	1	2	3	3	6
	KNUST School of Business	1	0	1	2	0	2	3	0	3
	TOTAL	4	2	6	3	1	4	7	3	10
SCIENCE	Biosciences	15	14	29	5	1	6	20	15	35
	Physical and Computational Sciences	13	2	15	3	0	3	16	2	18
	TOTAL	28	16	44	8	1	9	36	17	53
INSTITUTE OF DISTANCE LEARNING	Institute of Distance Learning	9	1	10	0	0	0	9	1	10
	TOTAL	87	40	127	24	5	29	111	45	156

APPLICATION AND ADMISSION INFO BY COLLEGE AND GENDER

College	APPLIED			QUALIFIED			ADMITTED			NEW ENTRANT			ENROLLED		
	F	M	T	F	M	T	F	M	T	F	M	T	F	M	T
CANR	482	1254	1736	363	968	1331	730	1865	2595	535	1345	1880	1632	3880	5512
CABE	2827	5506	8333	2363	4372	6735	1959	3434	5393	1788	3187	4975	3521	6368	9889
CoE	1387	6219	7606	1167	5014	6181	712	2995	3707	487	1966	2453	1371	6518	7889
CoE*	57	262	319	12	31	43	12	31	43	0	0	0	0	0	0
CHS	6635	4712	11347	4646	3777	8423	1738	1169	2907	1580	1130	2710	4490	3367	7857
CHS*	7982	2467	10449	7570	2382	9952	7714	2387	10101	7110	2284	9394	7180	2337	9517
CoHSS	8058	7956	16014	6006	5858	11864	3429	3883	7312	2362	2417	4779	6552	7380	13932
IDL	2945	5843	8788	2647	5118	7765	2665	5157	7822	2284	4248	6532	3699	7048	10747
CoS*	103	84	187	103	84	187	103	84	187	28	38	66	28	38	66
CoS	1989	3570	5559	1573	2844	4417	1377	2448	3825	845	1580	2425	3220	5729	8949
TOTAL	32465	37873	70338	26450	30448	56898	20439	23453	43892	17019	18195	35214	31693	42665	74358
PERCENTAGE	46%	54%	100%	46%	54%	100%	47%	53%	100%	48%	52%	100%	43%	57%	100%

Starred (*) programmes by Affiliate Institutions

CURRENT STUDENT INFORMATION BY GENDER

GENDER	CURRENT STUDENT POPULATION
MALE	42665
FEMALE	31693
TOTAL	74358

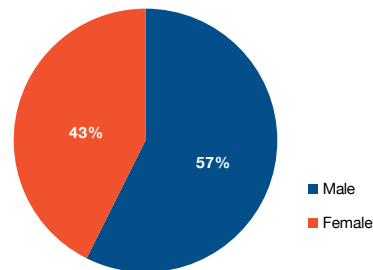


Figure 1: Gender Distribution

APPLICATION AND ADMISSION INFORMATION BY COLLEGES

College	APPLIED	QUALIFIED	ADMITTED	NEW ENTRANT	ENROLLED
CANR	1736	1331	2595	1880	5512
CABE	8333	6735	5393	4975	9889
CoE	7606	6181	3707	2453	7889
CoE*	319	43	43	0	0
CHS	11347	8423	2907	2710	7857
CHS*	10449	9952	10101	9394	9517
CoHSS	16014	11864	7312	4779	13932
IDL	8788	7765	7822	6532	10747
CoS*	187	187	187	66	66
CoS	5559	4417	3825	2425	8949
TOTAL	70338	56898	43892	35214	74358

Starred (*) programmes by Affiliate Institutions

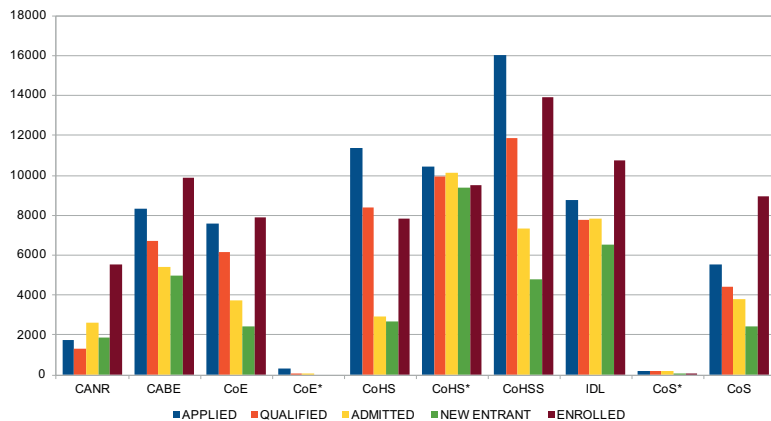
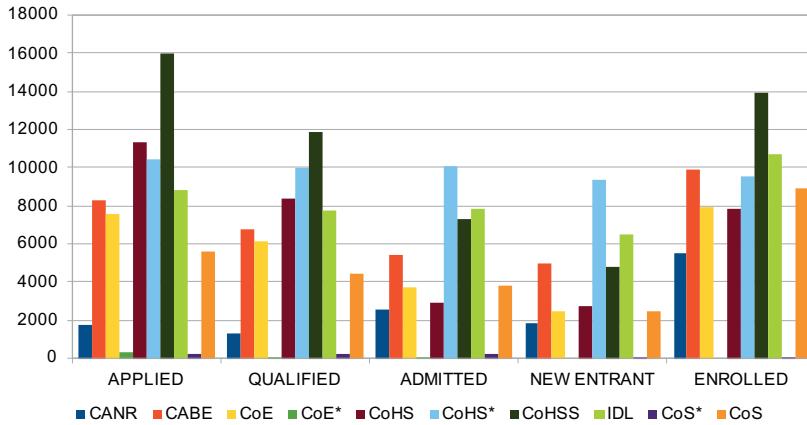
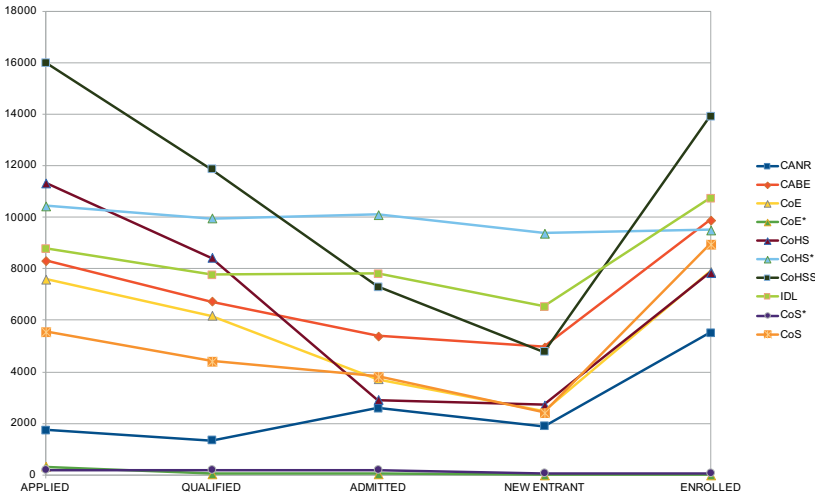


Figure 2: Application and Admission Information

CURRENT STUDENT INFORMATION BY GENDER



◀ Figure 3: Application and Admission Information



◀ Figure 4 Application and Admission Trends

APPLICATION AND ADMISSION INFO BY COLLEGE, FACULTY AND GENDER

COLLEGE	FACULTY	APPLIED			QUALIFIED			ADMITTED			NEW ENTRANT			CURRENT STUDENT POPULATION		
		F	M	T	F	M	T	F	M	T	F	M	T	F	M	T
AGRICULTURE AND NATURAL RESOURCES	Agriculture	248	821	1069	183	626	809	383	1244	1627	288	910	1198	870	2555	3425
	Renewable Natural Resources	234	433	667	180	342	522	347	621	968	247	435	682	762	1325	2087
	TOTAL	482	1254	1736	363	968	1331	730	1865	2595	535	1345	1880	1632	3880	5512
ART AND BUILT ENVIRONMENT	Art	823	1480	2303	542	928	1470	547	833	1380	441	685	1126	1332	2172	3504
	Built Environment	1134	2649	3783	959	2084	3043	527	1180	1707	453	989	1442	1338	2860	4198
	Educational Studies	870	1377	2247	862	1360	2222	885	1421	2306	894	1513	2407	851	1336	2187
	TOTAL	2827	5506	8333	2363	4372	6735	1959	3434	5393	1788	3187	4975	3521	6368	9889
ENGINEERING	Civil And Geo-Engineering	522	1955	2477	435	1562	1997	234	907	1141	168	582	750	471	2160	2631
	Civil And Geo-Engineering *	19	101	120	3	4	7	3	4	7	0	0	0	0	0	0
	Electrical And Computer Engineering	394	2103	2497	337	1703	2040	185	801	986	110	553	663	311	1580	1891
	Electrical And Computer Engineering*	19	101	120	8	23	31	8	23	31	0	0	0	0	0	0
	Mechanical And Chemical Engineering	471	2161	2632	395	1749	2144	293	1287	1580	209	831	1040	589	2778	3367
	Mechanical And Chemical Engineering*	19	60	79	1	4	5	1	4	5	0	0	0	0	0	0
	TOTAL	1444	6481	7925	1179	5045	6224	724	3026	3750	487	1966	2453	1371	6518	7889

APPLICATION AND ADMISSION INFO BY COLLEGE, FACULTY AND GENDER

COLLEGE	FACULTY	APPLIED			QUALIFIED			ADMITTED			NEW ENTRANT			CURRENT STUDENT POPULATION		
		F	M	T	F	M	T	F	M	T	F	M	T	F	M	T
HEALTH SCIENCES	Allied Health Sciences	3928	1389	5317	2443	1017	3460	1070	438	1508	955	364	1319	2398	914	3312
	Allied Health Sciences*	7927	2421	10348	7515	2336	9851	7659	2341	10000	7055	2238	9293	7125	2291	9416
	Pharmacy and Pharmaceutical Sciences	749	1069	1818	634	904	1538	214	300	514	168	246	414	912	1216	2128
	KNUST School of Medicine and Dentistry	1781	1992	3773	1494	1708	3202	317	256	573	259	233	492	1046	1019	2065
	KNUST School of Medicine and Dentistry*	55	46	101	1	4	5	55	46	101	55	46	101	55	46	101
	School of Public Health	147	165	312	106	119	225	106	120	226	92	94	186	86	87	173
	School of Veterinary Medicine	30	97	127	23	71	94	31	55	86	106	193	299	48	131	179
	TOTAL	14617	7179	21796	12216	6159	18375	9452	3556	13008	8690	3414	12104	11670	5704	17374
HUMANITIES AND SOCIAL SCIENCES	KNUST School of Business	3395	3663	7058	2592	2740	5332	1555	1841	3396	1044	1068	2112	2452	3034	5486
	Law	1157	708	1865	920	533	1453	156	157	313	123	238	361	416	427	843
	Social Sciences	3506	3585	7091	2494	2585	5079	1718	1885	3603	1195	1111	2306	3684	3919	7603
	TOTAL	8058	7956	16014	6006	5858	11864	3429	3883	7312	2362	2417	4779	6552	7380	13932
INSTITUTE OF DISTANCE LEARNING	Institute of Distance Learning	3048	5927	8975	2750	5202	7952	2768	5241	8009	2312	4286	6598	3727	7086	10813

COLLEGE	FACULTY	APPLIED			QUALIFIED			ADMITTED			NEW ENTRANT			CURRENT STUDENT POPULATION		
		F	M	T	F	M	T	F	M	T	F	M	T	F	M	T
SCIENCE	Biosciences	1237	900	2137	934	751	1685	791	837	1628	521	528	1049	1868	1837	3705
	Biosciences*	103	84	187	103	84	187	103	84	187	28	38	66	28	38	66
	Physical and Computational Sciences	649	2586	3235	536	2009	2545	483	1527	2010	296	1014	1310	1324	3854	5178
	TOTAL	1989	3570	5559	1573	2844	4417	1377	2448	3825	845	1580	2425	3220	5729	8949
TOTAL		32465	37873	70338	26450	30448	56898	20439	23453	43892	17019	18195	35214	31693	42665	74358

UNDERGRADUATE APPLICATION AND ADMISSION INFO BY COLLEGE AND GENDER

COLLEGE	APPLIED			QUALIFIED			ADMITTED			NEW ENTRANT			CURRENT STUDENT POPULATION		
	F	M	T	F	M	T	F	M	T	F	M	T	F	M	T
CANR	444	1107	1551	330	842	1172	697	1738	2435	510	1268	1778	1632	3880	5512
CABE	2609	4884	7493	2173	3823	5996	1770	2886	4656	1597	2589	4186	3521	6368	9889
CoE	1245	5568	6813	1066	4578	5644	621	2583	3204	426	1788	2214	1371	6518	7889
CoE*	57	262	319	12	31	43	0	0	0	0	0	0	0	0	0
CHS	6378	4299	10677	4471	3510	7981	9276	3287	12563	8472	3054	11526	11670	5704	17374
CHS*	7982	2467	10449	7570	2382	9952	0	0	0	0	0	0	0	0	0
CoHSS	7575	6927	14502	5616	5044	10660	3038	3060	6098	2101	1994	4095	6552	7380	13932
IDL	1614	3015	4629	1390	2499	3889	1396	2511	3907	1282	2214	3496	3727	7086	10813
CoS	1690	3055	4745	1329	2461	3790	1234	2146	3380	847	1467	2314	3220	5729	8949
CoS*	103	84	187	103	84	187	0	0	0	0	0	0	0	0	0
TOTAL	29697	31668	61365	24060	25254	49314	18032	18211	36243	15235	14374	29609	31693	42665	74358
PERCENTAGE	48%	52%	100%	49%	51%	100%	50%	50%	100%	51%	49%	100%	43%	57%	100%

Starred (*) programmes by Affiliate Institutions

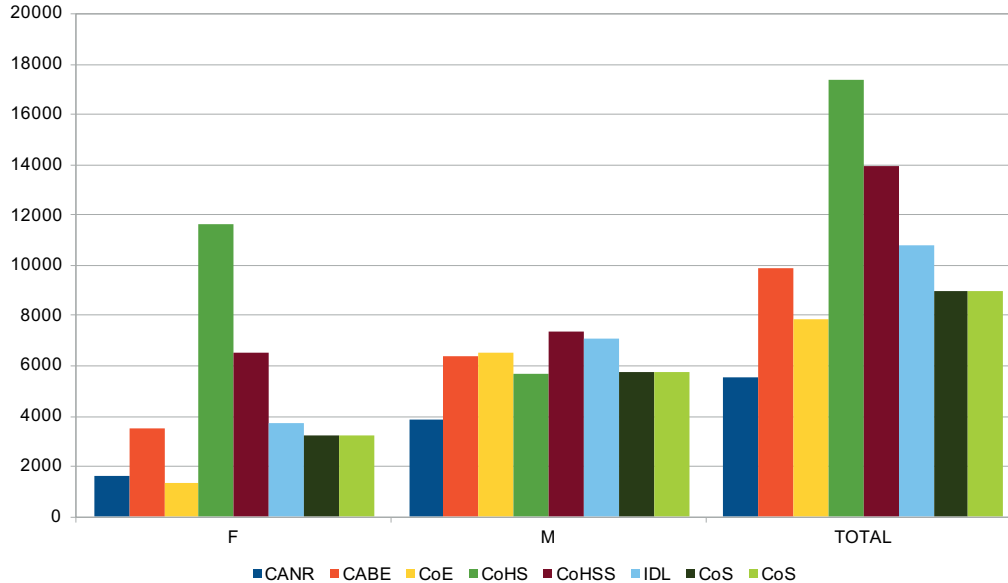
POST GRADUATE APPLICATION AND ADMISSION INFO BY COLLEGE AND GENDER

COLLEGE	APPLIED			QUALIFIED			ADMITTED			NEW ENTRANT			CURRENT GRADUATE STUDENT POPULATION		
	F	M	T	F	M	T	F	M	T	F	M	T	F	M	T
CANR	59	147	185	33	126	159	33	127	160	25	77	102	66	187	253
CABE	218	622	840	190	549	739	189	549	738	155	446	601	232	689	921
COE	142	651	793	101	436	537	103	443	546	80	303	383	115	449	564
CHS	257	413	670	175	267	442	176	269	445	129	194	323	185	288	473
CoHSS	483	1029	1512	390	814	1204	391	823	1214	297	580	877	508	972	1480
IDL	1434	2912	4346	1360	2703	4063	1372	2730	4102	1100	2103	3203	1426	2564	3990
CoS	196	431	627	141	299	440	143	302	445	97	225	322	161	347	508
TOTAL	2789	6205	8973	2390	5194	7584	2407	5243	7650	1883	3928	5811	2693	5496	8189
PERCENTAGE	31%	69%	100%	32%	68%	100%	31%	69%	100%	32%	68%	100%	33%	67%	100%

STUDENT ENROLMENT BY COLLEGE, FACULTY AND GENDER

COLLEGE	FACULTY	GENDER		TOTAL
		F	M	
AGRICULTURE AND NATURAL RESOURCES	Agriculture	870	2555	3425
	Renewable Natural Resources	762	1325	2087
	TOTAL	1632	3880	5512
ART AND BUILD ENVIRONMENT	Art	1332	2172	3504
	Built Environment	1338	2860	4198
	Educational Studies	851	1336	2187
	TOTAL	3521	6368	9889
ENGINEERING	Civil And Geo-Engineering	471	2160	2631
	Electrical And Computer Engineering	311	1580	1891
	Mechanical And Chemical Engineering	589	2778	3367
	TOTAL	1371	6518	7889
HEALTH SCIENCES	Allied Health Sciences	9523	3205	12728
	Pharmacy and Pharmaceutical Sciences	912	1216	2128
	KNUST School of Medicine and Dentistry	1101	1106	2166
	School of Public Health	86	87	173
	School of Veterinary Medicine	48	131	179
	TOTAL	11670	5704	17374
HUMANITIES AND SOCIAL SCIENCES	KNUST School of Business	2452	3034	5486
	Law	416	427	843
	Social Sciences	3684	3919	7603
	TOTAL	6552	7380	13932
INSTITUTE OF DISTANCE LEARNING	Institute of Distance Learning	3727	7086	10813
SCIENCES	Biosciences	1896	1875	3771
	Physical and Computational Sciences	1324	3854	5178
	TOTAL	3220	5729	8949

COLLEGE	F	M	TOTAL
CANR	1632	3880	5512
CABE	3521	6368	9889
CoE	1371	6518	7889
CHS	11670	5704	17374
CoHSS	6552	7380	13932
IDL	3727	7086	10813
CoS	3220	5729	8949
TOTAL	31693	42665	74358



◀ Figure 5: Student enrolment by gender, college and faculty

UNDERGRADUATE ENROLMENT OF GHANAIAN STUDENTS

COLLEGE	FACULTY	GENDER		
		M	F	TOTAL
AGRICULTURE AND NATURAL RESOURCES	Agriculture	822	2419	3241
	Renewable Natural Resources	741	1264	2005
ART AND BUILT ENVIRONMENT	Art	1270	2047	3317
	Built Environment	1157	2281	3438
	Educational Studies	851	1336	2187
ENGINEERING	Civil And Geo-Engineering	389	1859	2248
	Electrical And Computer Engineering	296	1492	1788
	Mechanical And Chemical Engineering	552	2607	3159
HEALTH SCIENCES	Allied Health Sciences	9471	3157	12628
	Pharmacy and Pharmaceutical Sciences	793	1100	1893
	KNUST School of Medicine and Dentistry	987	941	1928
	School of Veterinary Medicine	45	124	169
HUMANITIES AND SOCIAL SCIENCES	KNUST School of Business	2031	2394	4425
	Law	386	397	783
	Social Sciences	3588	3595	7183
INSTITUTE OF DISTANCE LEARNING	Institute of Distance Learning	2301	4523	6824
SCIENCE	Biosciences	1787	1742	3529
	Physical and Computational Sciences	1254	3613	4867
TOTAL		28721	36891	65612

POST GRADUATE ENROLMENT OF GHANAIAI STUDENTS

College	Faculty	GENDER		TOTAL
		F	M	
AGRICULTURE AND NATURAL RESOURCES	Agriculture	43	123	166
	Renewable Natural Resources	20	61	81
ART AND BUILT ENVIRONMENT	Art	56	122	178
	Built Environment	171	559	730
ENGINEERING	Civil And Geo-Engineering	55	239	294
	Electrical And Computer Engineering	4	51	55
	Mechanical And Chemical Engineering	29	105	134
HEALTH SCIENCES	Allied Health Sciences	28	38	66
	Pharmacy and Pharmaceutical Sciences	41	81	122
	KNUST School of Medicine and Dentistry	28	78	106
	School of Public Health	84	84	168
HUMANITIES AND SOCIAL SCIENCES	KNUST School of Business	410	628	1038
	Law	14	27	41
	Social Sciences	83	314	397
INSTITUTE OF DISTANCE LEARNING	Institute of Distance Learning	1425	2560	3985
SCIENCE	Biosciences	91	114	205
	Physical and Computational Sciences	64	227	291
TOTAL		2646	5411	8057

ENROLMENT BY INTERNATIONAL STUDENTS

College	Faculty	GENDER		TOTAL
		F	M	
AGRICULTURE AND NATURAL RESOURCES	Agriculture	5	13	18
	Renewable Natural Resources	1	0	1
ART AND BUILT ENVIRONMENT	Art	6	3	9
	Built Environment	10	20	30
ENGINEERING	Civil And Geo-Engineering	27	62	89
	Electrical And Computer Engineering	11	37	48
	Mechanical And Chemical Engineering	8	66	74
HEALTH SCIENCES	Allied Health Sciences	24	10	34
	Pharmacy and Pharmaceutical Sciences	78	35	113
	KNUST School of Medicine and Dentistry	86	46	119
	School of Public Health	2	3	5
	School of Veterinary Medicine	3	7	10
HUMANITIES AND SOCIAL SCIENCES	KNUST School of Business	11	12	23
	Law	16	3	19
	Social Sciences	13	10	23
INSTITUTE OF DISTANCE LEARNING	Institute of Distance Learning	1	3	4
SCIENCE	Biosciences	18	19	37
	Physical and Computational Sciences	6	14	20
TOTAL		326	363	676

ENROLMENT BY STUDENTS BY NATIONALITY

Country	F	M	Total
Australia	0	1	1
Benin	5	9	14
Botswana	1	0	1
Burkina Faso	12	9	21
Burundi	1	1	2
Cameroon	36	28	64
Central African Republic	1	1	2
China	0	1	1
Congo	1	3	4
Congo, DR	0	3	3
Côte D'Ivoire	7	4	11
Equatorial Guinea	1	0	1
Ethiopia	0	2	2
France	0	4	4
Gabon	0	1	1
Gambia	4	29	33
Germany	4	2	6
Ghana	31370	42303	73673
Greece	0	1	1
India	1	0	1
Ireland	0	1	1
Italy	1		1
Kenya	5	4	9
Lebanon	0	2	2

Country	F	M	Total
Liberia	1	11	12
Libyan Arab Jamahiriya	1	0	1
Malawi	2	3	5
Mali	3	1	4
Namibia	1	2	3
Netherlands	0	1	1
Niger	1	9	10
Nigeria	210	203	413
Pakistan		2	2
Rwanda	6	5	11
Senegal	2	0	2
Sierra Leone	7	15	22
South Africa	0	1	1
Sudan	1	2	3
Swaziland	0	1	1
Tanzania	1	3	4
Togo	0	1	1
Uganda	3	7	10
United Kingdom	2	1	3
United States	3	2	5
Zambia	2	0	2
Zimbabwe	5	4	9
Total Result	31701	42683	74384

UNDERGRADUATE ENROLMENT OF INTERNATIONAL STUDENTS

College	Faculty	GENDER		TOTAL
		F	M	
AGRICULTURE AND NATURAL RESOURCES	Agriculture	3	10	13
ART AND BUILT ENVIRONMENT	Art	3	3	6
	Built Environment	8	12	20
ENGINEERING	Civil And Geo-Engineering	5	30	35
	Electrical And Computer Engineering	10	30	40
	Mechanical And Chemical Engineering	4	51	55
HEALTH SCIENCES	Allied Health Sciences	24	10	34
	Pharmacy and Pharmaceutical Sciences	78	32	110
	KNUST School of Medicine and Dentistry	84	45	116
	School of Veterinary Medicine	3	7	10
HUMANITIES AND SOCIAL SCIENCES	KNUST School of Business	11	11	22
	Law	15	2	17
	Social Sciences	13	9	22
SCIENCE	Biosciences	14	15	29
	Physical and Computational Sciences	4	12	16
TOTAL		279	279	558

POST GRADUATE ENROLMENT OF INTERNATIONAL STUDENTS

College	Faculty	GENDER		TOTAL
		F	M	
AGRICULTURE AND NATURAL RESOURCES	Agriculture	2	3	5
	Renewable Natural Resources	1	0	1
ART AND BUILT ENVIRONMENT	Art	3	0	3
	Built Environment	2	8	10
ENGINEERING	Civil And Geo-Engineering	22	32	54
	Electrical And Computer Engineering	0	7	8
	Mechanical And Chemical Engineering	4	15	19
HEALTH SCIENCES	Pharmacy and Pharmaceutical Sciences	0	3	3
	KNUST School of Medicine and Dentistry	1	0	1
	School of Public Health	2	3	5
HUMANITIES AND SOCIAL SCIENCES	KNUST School of Business	0	1	1
	Law	1	1	2
	Social Sciences	0	1	1
INSTITUTE OF DISTANCE LEARNING	Institute of Distance Learning	1	3	4
SCIENCE	Biosciences	4	4	8
	Physical and Computational Sciences	2	2	4
TOTAL		45	83	129

GENDER DISTRIBUTION (JUNIOR STAFF)

COLLEGE	FACULTY	CURRENT DEPARTMENT	JUNIOR STAFF		
			M	F	T
		Academic Affairs	0	1	1
		Accra Guesthouse	6	5	11
		Admissions Office	1	0	1
		Africa Hall	3	2	5
		Catholic Chaplaincy	0	1	1
		Community Centre	1	0	1
		Dean of Students	9	7	16
		Development Office	2	1	3
		Environmental Quality Unit	70	6	76
		Estate Organisation	14	9	23
		Examinations Office	1	0	1
		Finance Office	2	1	3
		General Administration	4	3	7
		Grounds and Gardens	15	5	20
		Independence Hall	6	0	6
		International Programmes Office	0	1	1
		KNUST Basic Schools	11	21	32
		KNUST Day Care Centre	1	0	1
		Legal Services	2	0	2
		Library	12	10	22
		Maintenance	49	2	51
		Photocopy Unit	4	0	4
		Printing Press	9	4	13
		Procurement Office	3	0	3

COLLEGE	FACULTY	CURRENT DEPARTMENT	JUNIOR STAFF		
			M	F	T
		Protestant Chaplaincy	1	0	1
		Quality Assurance and Planning Unit	0	1	1
		Queen Elizabeth II Hall	4	0	4
		Registrar's Office	1	0	1
		Republic Hall	5	1	6
		School of Graduate Studies	1	0	1
		Security Service	184	12	196
		Senior Staff Club	4	4	8
		Sports Directorate	7	0	7
		Spring Hostel	1	0	1
		Steven Paris Hostel	3	0	3
		Student Affairs	1	0	1
		Swimming Pool	1	0	1
		Transport	6	0	6
		UITS	0	2	2
		Unity Hall	6	0	6
		University Hall	9	0	9
		University Hospital	19	18	37
		University J.H.S.	1	0	1
		University Primary School	0	1	1
		University Relations Office	0	1	1
		University Stores	0	1	1
		Vice-Chancellor's Office	1	0	1
		Total	480	120	600

GENDER DISTRIBUTION (JUNIOR STAFF)

COLLEGE	FACULTY	CURRENT DEPARTMENT	JUNIOR STAFF			
			M	F	T	
Agriculture and Natural Resources		Bureau of Integrated Rural Development	2	1	3	
		Provost's Office - College of Agriculture and Natural Resources	5	2	7	
		Total	7	3	10	
	Agriculture	Agricultural Economics, Agribusiness and Extension	1	0	1	
		Agricultural Research Station	8	3	11	
		Animal Science	5	0	5	
		Crop and Soil Sciences	7	0	7	
		Horticulture	6	0	6	
		KNUST Dairy/Beef Cattle Research Station	6	2	8	
		Total (Department)	33	5	38	
	Renewable Natural Resources	Dean's Office - Faculty of Renewable Natural Resources	6	0	6	
		Total (Department)	6	0	6	
	Total (Faculty)			46	8	54
	Art and Built Environment		Provost's Office - College of Art and Built Environment	9	3	12
Total			9	3	12	
Art		Communication Design	2	1	3	
		Industrial Art	3	0	3	
		Painting and Sculpture	4	2	6	
		Publishing Studies	1	0	1	
		Total (Department)	10	3	13	
Built Environment		Architecture	1	0	1	
		Centre for Settlement Studies	5	0	5	
		Construction Technology and Management	3	0	3	
		Land Economy	1	0	1	
		Total (Department)	10	0	10	

COLLEGE	FACULTY	CURRENT DEPARTMENT	JUNIOR STAFF			
			M	F	T	
	Educational Studies	Educational Innovations in Science and Technology	1	0	1	
		Total (Department)	1	0	1	
	Total (Faculty)		30	6	36	
Engineering		Provost's Office - College of Engineering	8	4	12	
		Technology Consultancy Centre	1	0	1	
		Total (Department)	9	4	13	
	Civil and Geo-Engineering	Geomatic Engineering	2	0	2	
		Total (Department)	2	0	2	
	Mechanical and Chemical Engineering	Agricultural and Biosystems Engineering	2	0	2	
		Chemical Engineering	0	1	1	
		Mechanical Engineering	2	0	2	
		Total (Department)	4	1	5	
	Total (Faculty)		15	5	20	
	Health Sciences		Hale and Hearty Sports Centre	1	0	1
			Provost's Office - College of Health Sciences	9	3	12
Total			10	3	13	
Allied Health Sciences		Dean's Office - Faculty of Allied Health Sciences	3	2	5	
		Sports and Exercise Science	1	0	1	
		Total (Department)	4	2	6	

GENDER DISTRIBUTION (JUNIOR STAFF)

COLLEGE	FACULTY	CURRENT DEPARTMENT	JUNIOR STAFF		
			M	F	T
	KNUST School of Medicine and Dentistry	Anatomy	4	0	4
		Behavioural Sciences	1	0	1
		Clinical Students Hostel - KATH	12	0	12
		Dean's Office - KNUST School of Medicine and Dentistry	2	0	2
		Obstetrics and Gynaecology	1	0	1
		Physiology	1	0	1
		Total (Department)	21	0	21
	Pharmacy and Pharmaceutical Sciences	Pharmaceutical Chemistry	1	1	2
		Pharmaceutics	1	0	1
		Pharmacognosy	2	0	2
		Pharmacology	1	0	1
		Pharmacy Practice	2	0	2
		Total (Department)	7	1	8
	School of Public Health	Dean's Office - School of Public Health	1	0	1
		Total (Department)	1	0	1
		Total (Faculty)	43	6	49
	Humanities and Social Sciences	Provost's Office - College of Humanities and Social Sciences	Provost's Office - College of Humanities and Social Sciences	2	4
Total			2	4	6
Centre for Cultural and African Studies			1	0	1
		Total (Department)	1	0	1
KNUST School of Business		Dean's Office - KNUST School of Business	0	1	1
		Total (Department)	0	1	1
Law		Dean's Office - Faculty of Law	0	1	1
		Total (Department)	0	1	1

COLLEGE	FACULTY	CURRENT DEPARTMENT	JUNIOR STAFF		
			M	F	T
	Social Sciences	Dean's Office - Faculty of Social Sciences	1	2	3
		Geography and Rural Development	1	0	1
		Total (Department)	2	2	4
	Total (Faculty)		5	8	13
Institute of Distance Learning		Institute of Distance Learning	3	1	4
		Total (Department)	3	1	4
	Total (Faculty)		3	1	4
Science		Provost's Office - College of Science	6	4	10
		Total (Department)	6	4	10
		Biosciences	Biochemistry and Biotechnology	2	1
	Botanical Gardens		4	0	4
	Dean's Office - Faculty of Biosciences		0	1	1
	Optometry and Visual Science		1	0	1
	Theoretical and Applied Biology		1	0	1
	Total (Department)		8	2	10
	Physical and Computational Sciences	Chemistry	1	0	1
		Physics	1	0	1
		Total (Department)	2	0	2
	Total (Faculty)		16	6	22
	Total College		638	160	798

GENDER DISTRIBUTION (SENIOR STAFF)

COLLEGE	FACULTY	CURRENT DEPARTMENT	SENIOR STAFF		
			M	F	T
		Academic Affairs	1	0	1
		Accra Guesthouse	2	7	9
		Admissions Office	3	0	3
		Affiliations Office	0	1	1
		Africa Hall	6	3	9
		Centre for Business Development	0	1	1
		Dean of Students	5	2	7
		Development Office	12	3	15
		Environmental Quality Unit	6	0	6
		Estate Organisation	4	2	6
		Examinations Office	1	1	2
		Finance Office	9	10	19
		Fire Preventive Unit	7	0	7
		General Administration	8	2	10
		Grounds and Gardens	3	1	4
		GUSSS Secretariat	2	1	3
		HRD	7	3	10
		Independence Hall	5	1	6
		Internal Audit	6	3	9
		International Programmes Office	0	1	1
		KNUST Basic Schools	7	20	27
		KNUST Counselling Centre	0	1	1
		KNUST Obuasi Campus	0	1	1

COLLEGE	FACULTY	CURRENT DEPARTMENT	SENIOR STAFF		
			M	F	T
		Legal Services	1	2	3
		Library	18	17	35
		Maintenance	52	0	52
		Office of Grants and Research	1	0	1
		Photocopy Unit	4	2	6
		Post Graduate Hostel	1	1	2
		Printing Press	16	5	21
		Procurement Office	4	2	6
		Protestant Chaplaincy	2	0	2
		Quality Assurance and Planning Unit	0	2	2
		Queen Elizabeth II Hall	6	1	7
		Registrar's Office	4	0	4
		Republic Hall	8	1	9
		School of Graduate Studies	1	4	5
		Security Service	50	8	58
		Senior Staff Club	2	3	5
		Sports Directorate	3	0	3
		Spring Hostel	2	0	2
		Steven Paris Hostel	1	0	1
		Student Affairs	0	1	1
		Transport	6	2	8
		UITS	15	1	16
		Unity Hall	4	1	5
		University Hall	7	2	9
		University Hospital	57	88	145

GENDER DISTRIBUTION (SENIOR STAFF)

COLLEGE	FACULTY	CURRENT DEPARTMENT	SENIOR STAFF		
			M	F	T
		University J.H.S.	49	24	73
		University Primary School	25	51	76
		University Relations Office	1	3	4
		University Stores	1	1	2
		Vice-Chancellor's Office	6	3	9
		Wilkado Hostel	1	0	1
		Total		442	289
Agriculture and Natural Resources		Bureau of Integrated Rural Development		1	1
		Provost's Office - College of Agriculture and Natural Resources	14	7	21
		Total	14	8	22
	Agriculture	Agricultural Economics, Agribusiness and Extension		1	1
		Agricultural Research Station	5	1	6
		Animal Science	4	1	5
		Crop and Soil Sciences	9	3	12
		Dean's Office - Faculty of Agriculture	3	2	5
		Horticulture	7	0	7
		KNUST Dairy/Beef Cattle Research Station	2	0	2
	Total (Department)	30	8	38	
	Renewable Natural Resources	Agroforestry	0	1	1
		Dean's Office - Faculty of Renewable Natural Resources	4	3	7
		Forest Resources Technology	1	1	2
Silviculture and Forest Management		2	0	2	

COLLEGE	FACULTY	CURRENT DEPARTMENT	SENIOR STAFF		
			M	F	T
		Wildlife and Range Management	1	2	3
		Wood Science and Technology	2	1	3
		Total (Department)	10	8	18
	Total (Faculty)		54	24	78
Art and Built Environment		Provost's Office - College of Art and Built Environment	12	4	16
		Total	12	4	16
	Art	Communication Design	6	1	7
		Dean's Office - Faculty of Art	0	2	2
		Industrial Art	7	5	12
		Painting and Sculpture	4	0	4
		Publishing Studies	4	2	6
		Total (Department)	21	10	31
	Built Environment	Architecture	0	1	1
		Centre for Settlement Studies	3	1	4
		Construction Technology and Management	3	0	3
		Dean's Office - Faculty of Built Environment	0	1	1
		Land Economy	0	1	1
		Planning	1	1	2
		Total (Department)	7	5	12
	Educational Studies	Dean's Office - Faculty of Educational Studies	1	0	1
		Educational Innovations in Science and Technology	0	1	1
		Total (Department)	1	1	2
	Total (Faculty)		41	20	61

GENDER DISTRIBUTION (SENIOR STAFF)

COLLEGE	FACULTY	CURRENT DEPARTMENT	SENIOR STAFF			
			M	F	T	
Engineering		Provost's Office - College of Engineering	18	3	21	
		Technology Consultancy Centre	1	1	2	
		Total	19	4	23	
	Civil and Geo-Engineering	Civil Engineering	5	0	5	
		Dean's Office - Faculty of Civil and Geo-Engineering	0	1	1	
		Geological Engineering	1	2	3	
		Geomatic Engineering	4	5	9	
		Petroleum Engineering	5	1	6	
		Total (Department)	15	9	24	
	Electrical and Computer Engineering	Computer Engineering	1	2	3	
		Electrical and Electronic Engineering	6	2	8	
		Telecommunications Engineering	2	1	3	
		Total (Department)	9	5	14	
	Mechanical and Chemical Engineering	Agricultural and Biosystems Engineering	3	1	4	
		Chemical Engineering	4	1	5	
		Dean's Office - Faculty of Mechanical and Chemical Engineering	0	1	1	
		Materials Engineering	0	2	2	
		Mechanical Engineering	13	0	13	
		Total (Department)	20	5	25	
	Total (Faculty)			63	23	86

COLLEGE	FACULTY	CURRENT DEPARTMENT	SENIOR STAFF		
			M	F	T
Health Sciences		Central Laboratory	3	1	4
		Hale and Hearty Sports Centre	1	0	1
		Provost's Office - College of Health Sciences	12	3	15
		Total	16	4	20
	Allied Health Sciences	Dean's Office - Faculty of Allied Health Sciences	0	1	1
		Medical Diagnostics	2	1	3
		Nursing	0	1	1
		Total (Department)	2	3	5
	KNUST School of Medicine and Dentistry	Anatomy	3	2	5
		Behavioural Sciences	1	1	2
		Child Health	0	1	1
		Clinical Microbiology	1	1	2
		Clinical Students Hostel - KATH	9	1	10
		Dean's Office - KNUST School of Medicine and Dentistry	5	4	9
		Eye, Ear, Nose And Throat	1	1	2
		Medicine	0	1	1
		Molecular Medicine	3	1	4
		Obstetrics and Gynaecology	1		1
		Pathology	0	1	1
		Physiology	0	1	1
		Simulation Centre	4	0	4
		Surgery	1	0	1
Total (Department)	29	15	44		

GENDER DISTRIBUTION (SENIOR STAFF)

COLLEGE	FACULTY	CURRENT DEPARTMENT	SENIOR STAFF			
			M	F	T	
	Pharmacy and Pharmaceutical Sciences	Dean's Office - Faculty of Pharmacy and Pharm. Sciences	2	1	3	
		Herbal Medicine	1	2	3	
		Pharmaceutical Chemistry	2	2	4	
		Pharmaceutics	5	1	6	
		Pharmacognosy	2	0	2	
		Pharmacology	5	0	5	
		Pharmacy Practice	0	1	1	
		Total (Department)	17	7	24	
	School of Public Health	Centre for Disability and Rehabilitation Studies	2	1	3	
		Dean's Office - School of Public Health	0	1	1	
		Total (Department)	2	2	4	
	School of Veterinary Medicine	School of Veterinary Medicine	3	1	4	
		Total (Department)	3	1	4	
	Total (Faculty)			69	32	101
	Humanities and Social Sciences		Provost's Office - College of Humanities and Social Sciences	14	6	20
Total			14	6	20	
Centre for Cultural and African Studies			3	2	5	
Total (Department)			3	2	5	
KNUST School of Business		Accounting and Finance	1	0	1	
		Dean's Office - KNUST School of Business	3	4	7	
		Human Resource and Organisational Development	0	1	1	
		Marketing and Corporate Strategy	0	1	1	
		Supply Chain and Information Systems	0	1	1	
		Total (Department)	4	7	11	

COLLEGE	FACULTY	CURRENT DEPARTMENT	SENIOR STAFF		
			M	F	T
	Law	Dean's Office - Faculty of Law	6	4	10
		Total (Department)	6	4	10
	Social Sciences	Dean's Office - Faculty of Social Sciences	2	3	5
		Economics	1	1	2
		History and Political Studies	0	1	1
		Modern Languages	1	0	1
		Religious Studies	0	1	1
		Sociology and Social Work	0	1	1
		Total (Department)	4	7	11
	Total (Faculty)		31	26	57
Institute of Distance Learning		Institute of Distance Learning	6	8	14
		Total (Department)	6	8	14
		Total (Faculty)	6	8	14
Science		Provost's Office - College of Science	11	3	14
		Total (Department)	11	3	14
	Biosciences	Biochemistry and Biotechnology	5	1	6
		Environmental Science	0	1	1
		Food Science and Technology	3	3	6
		Optometry and Visual Science	0	2	2
		Theoretical and Applied Biology	5	2	7
		Total (Department)	13	9	22

GENDER DISTRIBUTION (SENIOR STAFF)

COLLEGE	FACULTY	CURRENT DEPARTMENT	SENIOR STAFF		
			M	F	T
	Physical and Computational Sciences	Chemistry	5	4	9
		Computer Science	3	1	4
		Mathematics	1	1	2
		Physics	9	2	11
		Statistics and Actuarial Science	0	1	1
		Total (Department)	18	9	27
	Total (Faculty)	42	21	63	
Total College		748	443	1191	

GENDER DISTRIBUTION SENIOR MEMBER -(ACADEMIC)

COLLEGE	FACULTY	CURRENT DEPARTMENT	SENIOR MEMBER (ACADEMIC)		
			M	F	T
		KNUST Basic Schools	0	1	1
		Library	5	2	7
		Total	5	3	8
Agriculture and Natural Resources		Bureau of Integrated Rural Development	6	2	8
		Provost's Office - College of Agriculture and Natural Resources	1	0	1
		Total	7	2	9
	Agriculture	Agricultural Economics, Agribusiness and Extension	14	1	15
		Animal Science	6	2	8
		Crop and Soil Sciences	13	2	15
		Horticulture	7	5	12
		KNUST Dairy/Beef Cattle Research Station	2	0	2
		Total (Department)	42	10	52
	Renewable Natural Resources	Agroforestry	5	1	6
		Fisheries and Watershed Management	8	2	10
		Forest Resources Technology	8	2	10
		Silviculture and Forest Management	5	2	7
		Wildlife and Range Management	6	0	6
		Wood Science and Technology	3	0	3
		Total (Department)	35	7	42
	Total (Faculty)		84	19	103

GENDER DISTRIBUTION SENIOR MEMBER -(ACADEMIC)

COLLEGE	FACULTY	CURRENT DEPARTMENT	SENIOR MEMBER (ACADEMIC)			
			M	F	T	
Art and Built Environment		Provost's Office - College of Art and Built Environment	1	0	1	
		Total	1	0	1	
	Art	Communication Design	10	2	12	
		Industrial Art	22	5	27	
		Painting and Sculpture	14	1	15	
		Publishing Studies	9	2	11	
		Total (Department)	55	10	65	
	Built Environment	Architecture	15	2	17	
		Centre for Settlement Studies	5	2	7	
		Construction Technology and Management	17	1	18	
		Land Economy	11	0	11	
		Planning	16	5	21	
		Total (Department)	64	10	74	
	Educational Studies	Dean's Office - Faculty of Educational Studies	1	0	1	
		Educational Innovations in Science and Technology	4	5	9	
		Total (Department)	5	5	10	
		Total (Faculty)		125	25	150

COLLEGE	FACULTY	CURRENT DEPARTMENT	SENIOR MEMBER (ACADEMIC)		
			M	F	T
Engineering		Provost's Office - College of Engineering	0	1	1
		Technology Consultancy Centre	3	0	3
		Total	3	1	4
	Civil and Geo-Engineering	Civil Engineering	21	1	22
		Geological Engineering	7	0	7
		Geomatic Engineering	13	0	13
		Petroleum Engineering	8	0	8
		Total (Department)	49	1	50
	Electrical and Computer Engineering	Computer Engineering	13	1	14
		Electrical and Electronic Engineering	8	0	8
		Telecommunications Engineering	7	0	7
		Total (Department)	28	1	29
	Mechanical and Chemical Engineering	Agricultural and Biosystems Engineering	13	0	13
		Chemical Engineering	10	4	14
		Materials Engineering	7	2	9
		Mechanical Engineering	21	3	24
		Total (Department)	51	9	60
Total (Faculty)		131	12	143	
Health Sciences		Central Laboratory	1	0	1
		Total (Department)	1	0	1
	Allied Health Sciences	Medical Diagnostics	8	1	9
		Nursing	5	5	10
		Sports and Exercise Science	3	1	4
		Total (Department)	16	7	23

GENDER DISTRIBUTION SENIOR MEMBER -(ACADEMIC)

COLLEGE	FACULTY	CURRENT DEPARTMENT	SENIOR MEMBER (ACADEMIC)		
			M	F	T
	KNUST School of Medicine and Dentistry	Anaesthesiology and Intensive Care	3	0	3
		Anatomy	3	1	4
		Basic Diagnostic Oral Health	0	1	1
		Behavioural Sciences	3	2	5
		Child Health	9	1	10
		Child Oral Health and Orthodontics	1	0	1
		Clinical Microbiology	6	1	7
		Community Dentistry	1	0	1
		Community Health	3	0	3
		Eye, Ear, Nose And Throat	4	1	5
		Medicine	11	3	14
		Molecular Medicine	7	1	8
		Obstetrics and Gynaecology	11	0	11
		Oral and Maxillofacial Sciences	2	0	2
		Pathology	3	0	3
		Physiology	3	1	4
		Radiology	2	0	2
		Surgery	9	0	9
		Total (Department)	81	12	93
	Pharmacy and Pharmaceutical Sciences	Dean's Office - Faculty of Pharmacy and Pharm. Sciences	0	1	1
		Pharmaceutical Chemistry	6	1	7
		Pharmaceutics	9	3	12
		Pharmacognosy	4	2	6
Pharmacology		8	2	10	

COLLEGE	FACULTY	CURRENT DEPARTMENT	SENIOR MEMBER (ACADEMIC)			
			M	F	T	
		Pharmacy Practice	2	3	5	
		Total (Department)	29	12	41	
	School of Public Health	Epidemiology and Biostatistics	2	0	2	
		Global and International Health	3	0	3	
		Health Policy, Management and Economics	2	0	2	
		Health Promotion and Education	3	1	4	
		Population, Family and Reproductive Health	2	0	2	
		Total (Department)	12	1	13	
	School of Veterinary Medicine	Anatomy and Physiology	2	0	2	
		Clinical Studies	1	1	2	
		Pathobiology	2	0	2	
		Public Health, Food Hygiene and Food Safety	2	0	2	
		School of Veterinary Medicine	1	0	1	
		Total (Department)	8	1	9	
	Total (Faculty)		147	33	180	
	Humanities and Social Sciences		Provost's Office - College of Humanities and Social Sciences	1	0	1
			Total	1	0	1
KNUST School of Business		Accounting and Finance	11	2	13	
		Dean's Office - KNUST School of Business	0	1	1	
		Human Resource and Organisational Development	4	4	8	
		Marketing and Corporate Strategy	8	1	9	
		Supply Chain and Information Systems	9	2	11	
Total (Department)		32	10	42		

GENDER DISTRIBUTION SENIOR MEMBER -(ACADEMIC)

COLLEGE	FACULTY	CURRENT DEPARTMENT	SENIOR MEMBER (ACADEMIC)		
			M	F	T
	Law	Commercial Law	3	3	6
		Private Law	1	2	3
		Public Law	5	1	6
		Total (Department)	9	6	15
	Social Sciences	Dean's Office - Faculty of Social Sciences	0	1	1
		Economics	9	2	11
		English	8	4	12
		Geography and Rural Development	14	1	15
		History and Political Studies	9	1	10
		Modern Languages	8	5	13
		Religious Studies	12	0	12
		Sociology and Social Work	13	3	16
	Total (Department)	73	17	90	
	Total (Faculty)		115	33	148

COLLEGE	FACULTY	CURRENT DEPARTMENT	SENIOR MEMBER (ACADEMIC)			
			M	F	T	
Science		Provost's Office - College of Science	1	0	1	
		Total	1	0	1	
	Biosciences	Biochemistry and Biotechnology	15	3	18	
		Environmental Science	6	0	6	
		Food Science and Technology	7	4	11	
		Optometry and Visual Science	9	3	12	
		Theoretical and Applied Biology	15	2	17	
		Total (Department)	52	12	64	
	Physical and Computational Sciences	Chemistry	14	3	17	
		Computer Science	12	0	12	
		Mathematics	15	0	15	
		Physics	20	0	20	
		Statistics and Actuarial Science	13	1	14	
		Total (Department)	74	4	78	
		Total (Faculty)		127	16	143
	Total College			734	141	875

GENDER DISTRIBUTION (SENIOR MEMBER - ADMINISTRATIVE)

COLLEGE	FACULTY	CURRENT DEPARTMENT	SENIOR MEMBER (ADMINISTRATIVE)		
			M	F	T
		Academic Affairs	0	1	1
		Admissions Office	0	1	1
		Affiliations Office	0	1	1
		Catholic Chaplaincy	1	0	1
		Dean of Students	2	3	5
		Development Office	6	2	8
		Estate Organisation	1	1	2
		Examinations Office	0	1	1
		Finance Office	10	1	11
		General Administration	1	2	3
		GUSSS Secretariat	2	0	2
		HRD	4	1	5
		Internal Audit	2	0	2
		International Programmes Office	0	1	1
		KNUST Accra Office	1	0	1
		KNUST Basic Schools	0	1	1
		KNUST Counselling Centre	0	2	2
		KNUST Obuasi Campus	1	0	1
		Legal Services	2	2	4
		Maintenance	0	1	1
		Office of Grants and Research	0	2	2
		Photocopy Unit	1	0	1
		Printing Press	2	1	3

COLLEGE	FACULTY	CURRENT DEPARTMENT	SENIOR MEMBER (ADMINISTRATIVE)		
			M	F	T
		Procurement Office	2	1	3
		Protestant Chaplaincy	1	0	1
		Quality Assurance and Planning Unit	2	2	4
		Queen Elizabeth II Hall	0	1	1
		Registrar's Office	1	1	2
		School of Graduate Studies	3	0	3
		Security Service	2	0	2
		Sports Directorate	1	0	1
		Student Affairs	0	1	1
		UITS	10	0	10
		Unity Hall	1	0	1
		University Hospital	14	8	22
		University Relations Office	2	1	3
		University Stores	0	1	1
Total		75	40	115	
Agriculture and Natural Resources		Provost's Office - College of Agriculture and Natural Resources	2	1	3
		Total	2	1	3
	Agriculture	Dean's Office - Faculty of Agriculture	0	1	1
		Total	0	1	1
	Renewable Natural Resources	Dean's Office - Faculty of Renewable Natural Resources	0	1	1
		Total	0	1	1
Total (College)		2	3	5	

GENDER DISTRIBUTION (SENIOR MEMBER - ADMINISTRATIVE)

COLLEGE	FACULTY	CURRENT DEPARTMENT	SENIOR MEMBER (ADMINISTRATIVE)			
			M	F	T	
Art and Built Environment		Provost's Office - College of Art and Built Environment	2	2	4	
		Total	2	2	4	
	Art	Dean's Office - Faculty of Art	0	1	1	
		Total	0	1	1	
	Built Environment	Dean's Office - Faculty of Built Environment	0	1	1	
		Total	0	1	1	
	Educational Studies	Dean's Office - Faculty of Educational Studies	1	0	1	
		Total	1	0	1	
	Total (College)			3	4	7
	Engineering		Provost's Office - College of Engineering	4	0	4
Total			4	0	4	
Total (College)			4	0	4	
Health Sciences		Provost's Office - College of Health Sciences	3	1	4	
		Total	3	1	4	
	KNUST School of Medicine and Dentistry	Dean's Office - KNUST School of Medicine and Dentistry	1	0	1	
		Total	1	0	1	
	Pharmacy and Pharmaceutical Sciences	Dean's Office - Faculty of Pharmacy and Pharm. Sciences	1	0	1	
		Total	1	0	1	
	School of Public Health	Dean's Office - School of Public Health	1	0	1	
		Total	1	0	1	
	School of Veterinary Medicine	School of Veterinary Medicine	1	0	1	
		Total	1	0	1	
Total (College)			7	1	8	

COLLEGE	FACULTY	CURRENT DEPARTMENT	SENIOR MEMBER (ADMINISTRATIVE)			
			M	F	T	
Humanities and Social Sciences		Provost's Office - College of Humanities and Social Sciences	3	1	4	
		Total	3	1	4	
	KNUST School of Business	Dean's Office - KNUST School of Business	1	1	2	
		Total	1	1	2	
	Social Sciences	Dean's Office - Faculty of Social Sciences	1	0	1	
		Total	1	0	1	
	Total (College)			5	2	7
	Institute of Distance Learning		Institute of Distance Learning	9	2	11
Total			9	2	11	
Total (College)			9	2	11	
Science		Provost's Office - College of Science	5	1	6	
		Total	5	1	6	
	Total (College)			5	1	6
Total College			110	53	163	

AGE DISTRIBUTION

ALL STAFF

Staff Type	<= 30 Yrs	31-40 Yrs	41-50 Yrs	51-60 Yrs	61 + Yrs	Total
Junior Staff	9	175	349	265	0	798
Senior Member (Academic)	6	212	269	294	102	883
Senior Member (Administrative)	3	29	65	67	0	164
Senior Staff	54	408	386	342	1	1,191
GRAND TOTAL	72	824	1,069	968	103	3,036

GENDER: MALE

Staff Type	<= 30 Yrs	31-40 Yrs	41-50 Yrs	51-60 Yrs	61 + Yrs	Total
Senior Member (Administrative)	2	19	38	52	0	111
Senior Member (Academic)	5	166	230	250	90	741
Junior Staff	6	132	274	226	0	638
Senior Staff	32	217	259	239	1	748
GRAND TOTAL	45	534	801	767	91	2,238

GENDER: FEMALE

Staff Type	<= 30 Yrs	31-40 Yrs	41-50 Yrs	51-60 Yrs	61 + Yrs	Total
Senior Member (Administrative)	1	10	27	15	0	53
Senior Member (Academic)	1	46	39	44	12	142
Junior Staff	3	43	75	39	0	160
Senior Staff	22	191	127	103	0	443
GRAND TOTAL	27	290	268	201	12	798

AGE DISTRIBUTION OF STAFF (COLLEGES)

AGRICULTURE AND NATURAL RESOURCES

Staff Type	<= 30 Yrs	31-40 Yrs	41-50 Yrs	51-60 Yrs	61 + Yrs	Total
Junior Staff	0	2	19	33	0	54
Senior Member (Academic)	0	30	26	31	16	103
Senior Member (Administrative)	0	0	1	4	0	5
Senior Staff	3	26	30	19	0	78
GRAND TOTAL	3	58	76	87	16	240

ART AND BUILT ENVIRONMENT

Staff Type	<= 30 Yrs	31-40 Yrs	41-50 Yrs	51-60 Yrs	61 + Yrs	Total
Junior Staff	0	8	16	12	0	36
Senior Member (Academic)	0	27	50	56	18	151
Senior Member (Administrative)	0	1	3	3	0	7
Senior Staff	2	19	14	25	0	60
GRAND TOTAL	2	55	83	96	18	254

ENGINEERING

Staff Type	<= 30 Yrs	31-40 Yrs	41-50 Yrs	51-60 Yrs	61 + Yrs	Total
Junior Staff	0	2	9	9	0	20
Senior Member (Academic)	3	51	24	45	21	144
Senior Member (Administrative)	0	1	0	3	0	4
Senior Staff	7	27	24	26	0	84
GRAND TOTAL	10	81	57	83	21	252

HEALTH SCIENCES

Staff Type	<= 30 Yrs	31-40 Yrs	41-50 Yrs	51-60 Yrs	61 + Yrs	Total
Junior Staff	0	5	24	20	0	49
Senior Member (Academic)	0	35	64	64	22	185
Senior Member (Administrative)	0	0	3	4	0	7
Senior Staff	6	36	27	33	0	102
GRAND TOTAL	6	76	118	121	22	343

HUMANITIES AND SOCIAL SCIENCES

Staff Type	<= 30 Yrs	31-40 Yrs	41-50 Yrs	51-60 Yrs	61 + Yrs	Total
Junior Staff	1	2	6	4	0	13
Senior Member (Academic)	2	37	56	44	9	148
Senior Member (Administrative)	0	1	2	4	0	7
Senior Staff	2	17	17	19	1	56
GRAND TOTAL	5	57	81	71	10	224

SCIENCE

Staff Type	<= 30 Yrs	31-40 Yrs	41-50 Yrs	51-60 Yrs	61 + Yrs	Total
Junior Staff	0	4	5	13	0	22
Senior Member (Academic)	1	32	47	48	16	144
Senior Member (Administrative)	0	1	3	2	0	6
Senior Staff	10	21	18	15	0	64
GRAND TOTAL	11	58	73	78	16	236

INSTITUTE OF DISTANCE LEARNING

Staff Type	<= 30 Yrs	31-40 Yrs	41-50 Yrs	51-60 Yrs	61 + Yrs	Total
Junior Staff	0	1	2	1	0	4
Senior Member (Administrative)	0	3	4	4	0	11
Senior Staff	3	2	2	8	0	15
GRAND TOTAL	3	6	8	13	0	30

HALLS OF RESIDENCE

HALL	NO. OF STUDENTS			NO. OF ROOMS			NO. OF FLOORS			NO. OF KITCHENETTES		
	M	F	TOTAL	M	F	TOTAL	M	F	TOTAL	M	F	TOTAL
UNITY HALL	896	896	1792	224	224	448	8	8	16	0	0	0
AFRICA HALL	384	376	760	96	96	192	8	8	16	0	0	1
INDEPENDENT HALL	784	392	1176	196	98	294	11	4	15	0	0	1
QUEENS HALL	768	408	1176	192	102	294	12	3	15	0	0	0
UNIVERSITY HALL	384	788	1172	96	198	294	7	5	12	0	0	5
REPUBLIC HALL	560	616	1176	161	133	294	11	7	18	0	0	0
OTUMFUOR OSEI AGYEMANG PREMPEH II HOSTEL (OLD)	140	113	253	70	57	127	0	0	3	70	57	127
OTUMFUOR OPOKU WARE II HOSTEL (NEW BRUNEI)	263	188	451	132	94	226	0	0	4	128	94	222
NANA AFIA SERWAA KOBİ AMPEM HOSTEL (BABY BRUNEI)	489	444	933	122	111	233	0	0	4	122	111	233
CHANCELLOR'S HALL (HALL 7)	360	589	949	90	147	237	0	0	6	90	147	237
BRUNEI COMPLEX	917	844	1761	305	281	586	0	0	7	305	281	586
TOTAL			11599			3225			116			1412

APPROVED HOSTELS BY OCCUPANCY OF STUDENTS

HOSTEL	NO. OF STUDENTS		TOTAL	NO. OF ROOMS	NO. OF FLOORS	KITCHENETTE	TOILET
	M	F					
NEVADA	235	182	417	106	4	0	106
CRYSTAL ROSE	220	175	395	180	5	0	180
SPLENDOR	228	142	370	150	4	0	150
GHANA HOSTELS	202	162	364	276	4	0	276
WESTEND	184	170	354	100	3	0	101
P III HOSTEL	172	160	332	102	4	0	102
ADOM- BI HOSTEL	185	142	327	110	4	0	110
FLINT XKLUSIV	145	172	317	136	5	0	137
ULTIMATE HOSTEL	186	98	284	108	4	0	108
DESTINY VIEW	158	108	266	56	4	0	56
PINAMANG HOSTEL	128	126	254	80	4	0	80
CELIA ROYAL	70	180	250	90	4	4	91
NANA ADOMAH	180	68	248	112	4	0	112
CANAM HALL	90	120	210	60	5	0	60
GEORGIA HOSTEL	160	42	202	100	4	0	100
WHITE HOUSE	92	108	200	58	3	0	58
SUNCITY	120	80	200	50	4	0	50
FRONTLINE INN	130	63	193	65	4	0	65
WAGYINGO	98	92	190	90	4	0	91
CANAM GOLD	98	82	180	60	4	0	60
PRESTIGE	105	60	165	72	4	0	72
BY HIS GRACE	68	97	165	59	4	0	60
MORNING STAR PALACE (ANNEX)	70	85	155	84	3	0	84

APPROVED HOSTELS BY OCCUPANCY OF STUDENTS

HOSTEL	NO. OF STUDENTS		TOTAL	NO. OF ROOMS	NO. OF FLOORS	KITCHENETTE	TOILET
	M	F					
SHEPHERDSVILLE	98	55	153	51	3	0	51
KGEE	80	72	152	60	4	0	61
ANGLICAN HOSTEL	110	40	150	80	4	0	80
JOHANNES	108	42	150	65	3	0	65
MASS	90	60	150	60	3	0	60
PREMIER TOWER PALACE	98	52	150	50	3	0	50
NYANTAKYI	112	36	148	46	5	0	46
JENEST HOSTEL	78	60	138	30	3	0	30
ROYAL GATE HOSTEL LTD.	72	61	133	41	3	0	42
FRONTLINE APARTMENT	93	40	133	40	4	0	40
HAPPY FAMILY	80	52	132	42	4	0	42
STANDARD	88	44	132	40	3	0	41
FRANCO HOSTEL	86	44	130	40	3	0	40
FRANCO HOSTEL ANNEX	80	50	130	40	3	0	40
NEW FRANCO	90	40	130	40	4	0	40
AMEN HOSTEL ANNEX	68	56	124	58	5	0	58
R & B	82	42	124	44	2	0	44
NYAME MIREKU	38	82	120	60	4	0	60
CANAM APPARTMENT	60	60	120	40	4	0	40
CHARIS	76	44	120	40	3	0	40
WHITPAM A	86	32	118	50	4	0	50
WHITPAM B	62	56	118	50	4	0	50
CHRISTLIKE	58	60	118	42	3	0	42
BEACON HOSTEL	85	32	117	39	4	0	39
BANIVILLAS HOSTEL	62	54	116	79	3	0	79

HOSTEL	NO. OF STUDENTS		TOTAL	NO. OF ROOMS	NO. OF FLOORS	KITCHENETTE	TOILET
	M	F					
AMEN HOSTEL INN	72	42	114	56	4	0	56
RISING STAR (NYBERG)	80	32	112	51	3	0	51
CANAM EXECUTIVE	63	43	106	54	4	0	54
HIGH ACHIEVERS	84	22	106	50	3	0	50
AMANDA HOSTEL	48	56	104	34	2	0	34
FRONTLINE COURT	69	34	103	36	4	0	36
NO WEAPON ANNEX	45	52	97	54	3	0	54
ASANSIKA HOSTEL	60	36	96	62	3	0	62
AMEN APPARTMENT	48	48	96	24	2	0	24
DE-LISA HOSTEL ANNEX	46	47	93	40	4	0	40
MANCHESTER	30	62	92	32	3	0	32
GLORY BE TO GOD ANNEX	52	40	92	30	4	0	30
JALEX HOSTEL	68	24	92	30	2	0	30
CEPOS HOSTEL	68	22	90	54	3	0	54
RISING SUN	69	20	89	30	3	0	30
HYDES	68	20	88	33	3	0	33
THINK JESUS	44	44	88	22	2	0	22
DE-LISA HOSTEL MAIN	52	35	87	34	3	0	34
HALLOWED	62	24	86	40	4	0	40
THE HOPES COMMUNITY	44	40	84	39	2	0	39
HONESTY STUDENTS HOSTEL	56	28	84	32	2	0	32
FOSUA HOMES	48	36	84	28	3	0	28
AFRIM	47	35	82	40	2	0	40
DAKENS INT. HOSTEL	54	28	82	32	3	0	32
BESCO	62	19	81	45	4	0	45

APPROVED HOSTELS BY OCCUPANCY OF STUDENTS

HOSTEL	NO. OF STUDENTS		TOTAL	NO. OF ROOMS	NO. OF FLOORS	KITCHENETTE	TOILET
	M	F					
ABUNDANT GRACE	56	24	80	28	2	4	28
JITA 2	48	32	80	20	3	0	20
AMERICAN HOUSE	40	36	76	36	3	0	37
JECADO HOSTEL	52	24	76	30	3	0	30
BLUE ARK	34	42	76	25	3	0	26
THE LIBERTY	52	23	75	35	2	0	35
KWAKYEWAA	54	20	74	40	4	0	40
VICTORY TOWERS	48	24	72	50	3	0	51
NO WEAPON	56	16	72	36	3	0	36
MILLENIUUM	68	4	72	32	3	0	32
LONG ISLAND	42	30	72	28	2	0	28
PROVIDENCE	40	28	68	36	2	0	36
B O EXECUTIVE HOSTEL	30	38	68	23	3	0	23
JITA HOSTEL	40	28	68	20	2	0	20
ANAROSA HOSTEL	41	25	66	34	3	0	34
ORANGE HOSTEL	52	12	64	31	4	0	31
GEORGE EMPIRE (AMANDA)	21	42	63	29	3	0	29
THE BEST	40	20	60	30	2	0	30
DIVINE KARMA	34	26	60	26	2	0	26
SHALOM KIBUTZ	90	42	58	59	3	0	59
CRESTHAVEN	40	18	58	28	3	0	28
RICHBAD	18	40	58	25	3	0	25
THY WILL BE DONE	28	24	52	34	2	0	34
MORNING STAR PALACE (MAIN)	42	10	52	28	2	0	28
GLORY BE TO GOD	28	20	48	20	2	0	20

HOSTEL	NO. OF STUDENTS		TOTAL	NO. OF ROOMS	NO. OF FLOORS	KITCHENETTE	TOILET
	M	F					
THY KINGDOM COME	20	28	48	20	2	0	20
AMEN HOSTEL MAIN	27	20	47	40	2	0	40
DEVALIPAH	26	18	44	15	3	0	15
CASA MARIA HOSTEL	22	18	40	20	3	0	20
ZORO 1	22	18	40	20	2	0	20
ENIN	24	14	38	20	3	0	20
OUTLOOK HOSTEL	18	12	30	15	2	0	15
TOTAL	7871	5645	13627	5446	339	8	5457

